



**DRAFT  
LINCOLN-SMD 1 WASTEWATER AUTHORITY  
MEETING AGENDA**

Regular Meeting of the Board of Directors

Lincoln City Hall, Third Floor Council Chambers  
600 Sixth Street, Lincoln, CA 95648

February 14, 2025 at 10:00 a.m.

The public may also observe and participate in the meeting via Zoom at the following videoconferencing link:

[https://us06web.zoom.us/webinar/register/WN\\_L2bYfOdARYiQxL2vDwckAQ](https://us06web.zoom.us/webinar/register/WN_L2bYfOdARYiQxL2vDwckAQ)

---

**Board of Directors**

COUNTY OF PLACER

Cindy Gustafson  
Shanti Landon

CITY OF LINCOLN

Holly Andreatta, Vice Chair  
John Reedy

**General Manager and Secretary**

Jim Mulligan

**Legal Counsel**

Wes Miliband

**PRELIMINARY MATTERS**

- A. OATH OF OFFICE – General Manager and Board Secretary Jim Mulligan will administer the oath of office to incoming Directors: City Council Member Reedy and County Supervisor Gustafson.
- B. CALL TO ORDER
- C. PLEDGE OF ALLEGIANCE
- D. ROLL CALL
- E. SELECTION OF OFFICERS - LiSWA's Joint Powers Agreement requires that the Chair and Vice Chair be appointees of different Members (the City and the County), and the Chair and Vice Chair positions must be held by appointees of alternating Members in alternating years. During 2024, the Chair was held by former County of Placer Director Holmes and the Vice Chair was held by City of Lincoln Director Andreatta. For the selection this year, the Chair must be a City of Lincoln Director and the Vice Chair a County of Placer Director.

- 1.1 Discussion, Nomination and Selection of Chair



1.2 Discussion, Nomination and Selection of Vice Chair

F. PUBLIC COMMENT ON NON-AGENDA ITEMS

*Any member of the public wishing to address the Board of Directors regarding items not on the Agenda within the Authority's subject matter jurisdiction should do so at this time. With respect to items on the Agenda, the Board will receive public comments at the time the item is opened for discussions, prior to any vote or other Board action. A three-minute time limit is requested. Please complete a speaker card and submit it to the General Manager at the meeting.*

**ACTION CALENDAR**

1. CONSENT ITEMS

*It is recommended by the General Manager that these items, which are expected to be routine in nature and without controversy, be received and acted upon by the Board without discussion. If any Board member or interested party requests that an item be removed from the Consent Calendar for discussion, it will be considered separately. The consent calendar may be approved by a single motion to approve, followed by a second and then a call for vote.*

1.1 Approval of Minutes – 12/13/24 Meeting

2. GENERAL MANAGER'S REPORT AND UPDATE – A PowerPoint and verbal report will be provided to include the following:

- Financial Report
- GM Work in Progress

3. REVISIONS TO THE FISCAL YEAR 2024-25 CAPITAL IMPROVEMENTS PROJECT LIST – A request from General Manager Jim Mulligan to approve revisions to the FY 24-25 Capital Project list.

4. WASTEWATER TREATMENT UNIT (WWTRU) UPDATE (Discussion, No Action) - A presentation will be provided.

5. JACOBS OPERATIONS REPORT (Discussion, No Action) – A PowerPoint and verbal report will be provided.

6. SPECIAL BOARD WORKSHOP (Discussion, No Action) – Information from General Manager regarding a Special Board Meeting Workshop, and request for possible workshop dates.

7. LEGAL REPORT – A verbal report from General Counsel pertaining to relevant legislative, case, or related developments that have occurred.

8. DIRECTOR'S COMMENTS



9. CLOSED SESSION MATTERS

- 9.1 THREAT TO PUBLIC SERVICES OR FACILITIES pursuant to Gov. Code sec. 54957(a) Consultation with: Jim Mulligan, General Manager

**ADJOURNMENT**

THE FOLLOWING INFORMATION IS PROVIDED TO ASSIST WITH PUBLIC PARTICIPATION:

Americans with Disabilities Act (ADA): In compliance with the ADA, if you need special assistance to participate in this meeting or other services in conjunction with this meeting, please contact the Lincoln City Clerk's Office at (916) 434-2490. The meeting room is wheelchair accessible and disabled parking is available. Notification at least 24 hours prior to the meeting or time when services are needed will assist staff in assuring reasonable arrangements can be made to provide accessibility to the meeting or service.

Agenda Availability: The main posting location of the LiSWA Agenda is on the public kiosk outside the entrance of Lincoln City Hall, 600 6th Street, Lincoln, California. Agenda Packets are available for review at the Lincoln City Clerk's Office, 600 6th Street, Lincoln, California.



**LINCOLN-SMD 1 WASTEWATER AUTHORITY**  
**MEETING MINUTES**

Regular Meeting of the Board of Directors

December 13, 2024 at 10:00 a.m.

---

**Board of Directors**

COUNTY OF PLACER

Jim Holmes, Chair  
Shanti Landon

CITY OF LINCOLN

Holly Andreatta, Vice Chair  
Vacant

**General Manager and Secretary**

Jim Mulligan

**Legal Counsel**

Wes Miliband

**PRELIMINARY MATTERS**

- A. CALL TO ORDER - The meeting was called to order at 10:01 am.
- B. PLEDGE OF ALLEGIANCE - The pledge was led by Chair Holmes.
- C. ROLL CALL

Jim Holmes, Chair

Holly Andreatta, Vice Chair

Shanti Landon, Director

Staff present:

Jim Mulligan, General Manager and Board Secretary

Wes Miliband, Legal Counsel

- D. PUBLIC COMMENT ON NON-AGENDA ITEMS

There were no public comments on non-agenda items.



## **ACTION CALENDAR**

### 1. CONSENT ITEMS

#### 1.1 Approval of Minutes – 11/08/24 Meeting

Motion to approve by Director Landon, Second by Director Andreatta, Approved 3-0.

### 2. SWEARING IN OF NEWLY APPOINTED BOARD MEMBER(S)

No Board Members to appoint at this time.

### 3. GENERAL MANAGER'S REPORT AND UPDATE – A PowerPoint and verbal report will be provided to include the following:

A PowerPoint and verbal report were provided discussing:

- WWTRU Evaluation Progress
- Financial Report
- GM Work in Progress

### 4. JACOBS WWTRF OPERATIONS TRANSITION REPORT – A PowerPoint and verbal report will be provided.

A written, PowerPoint and verbal report were provided by Cheryl Reeves, Transition Admin Lead, Alyssa “Sunshine” Smith, Geographic Manager of Operations, and Gary Hengst, Chief Operator. Board questions were answered as he discussed projects and operations.

### 5. COMMENDATION RESOLUTION FOR DIRECTOR JIM HOLMES – Consider adoption of a Resolution of Commendation honoring Director Jim Holmes for his Service to LiSWA and the County of Placer.

Director Andreatta read Commendation for Chair Holmes and was duly passed by Board of Directors.

Director Landon move to approve, second by Director Andreatta – Approved 3-0

LEGAL REPORT – Counsel will provide a verbal report if relevant legislative, case, or related developments have occurred. No Legal comments

DIRECTOR'S COMMENTS - No Directory comments

### 6. CLOSED SESSION MATTERS - None

## **ADJOURNMENT**

The meeting was adjourned at 10:31 am



# GENERAL MANAGER'S REPORT

LiSWA Regular Board Meeting  
February 14, 2025





# Agenda

- Financial Report
- GM Work in Progress



## General Manager's Report (Cont.)

### Financial Report

- Operations Fund Income Statement through end of December 2024
  - Total income through December 2024 was \$13.4M
  - Projected Revenue and Expense trending on target at end of year





2:41 PM  
02/06/25  
Accrual Basis

**Lincoln-Sewer Maintenance District 1 Wastewater Authority**  
**Operations Fund Income Statement**  
July through December 2024



	Jul - Dec 24	Budget	Variance	% of Budget	Notes
<b>Ordinary Income/Expense</b>					
<b>Income</b>					
42010 • Investment Income					
RC0560 • Investment Income	\$ 319,042.65				
<b>Total 42010 • Investment Income</b>	<b>\$ 319,042.65</b>				
42030 • Short Term Rents					
RC0600 Short Term Rents	\$ 56,670.00	\$ 69,090.00	\$ (12,420.00)	82.02%	
42030 • Short Term Rents • Other					
<b>Total 42030 • Short Term Rents</b>	<b>\$ 56,670.00</b>	<b>\$ 69,090.00</b>	<b>\$ (12,420.00)</b>	<b>82.02%</b>	
46230 • Sanitation Services					
RC2230 San Services-Operations	\$ 3,772,985.10	\$ 9,052,992.00	\$ (5,280,006.90)	41.68%	
46230 • Sanitation Services • Other					
<b>Total 46230 • Sanitation Services</b>	<b>\$ 3,772,985.10</b>	<b>\$ 9,052,992.00</b>	<b>\$ (5,280,006.90)</b>	<b>41.68%</b>	
46240 • Sanitation Serv Other					
RC2190 • Sewer Con Fees • CIP	\$ 2,625,896.88	\$ 4,275,648.00	\$ (1,649,751.12)	61.42%	
46240 • Sanitation Serv Other • Other					
<b>Total 46240 • Sanitation Serv Other</b>	<b>\$ 2,625,896.88</b>	<b>\$ 4,275,648.00</b>	<b>\$ (1,649,751.12)</b>	<b>61.42%</b>	
46360 • General Reimbursement					
RC2680 • Other	\$ 38,058.59				
<b>Total 46360 • General Reimbursement</b>	<b>\$ 38,058.59</b>				
48030 • Miscellaneous					
RC3010 Other Sales • Reclaimed	\$ 16,045.83	\$ 30,000.00	\$ (13,954.17)	53.49%	
48030 • Miscellaneous • Other					
<b>Total 48030 • Miscellaneous</b>	<b>\$ 16,045.83</b>	<b>\$ 30,000.00</b>	<b>\$ (13,954.17)</b>	<b>53.49%</b>	
<b>Total Income</b>	<b>\$ 6,828,699.05</b>	<b>\$ 13,427,730.00</b>	<b>\$ (6,599,030.95)</b>	<b>50.86%</b>	
<b>Gross Profit</b>	<b>\$ 6,828,699.05</b>	<b>\$ 13,427,730.00</b>	<b>\$ (6,599,030.95)</b>	<b>50.86%</b>	
<b>Expense</b>					
52020 • Goods					
SC2029 Chemicals	\$ 297,344.02	\$ 500,000.00	\$ (202,655.98)	59.51%	Seeking Reimbursement for Shared Chemical Costs
52020 • Goods • Other					
<b>Total 52020 • Goods</b>	<b>\$ 297,344.02</b>	<b>\$ 500,000.00</b>	<b>\$ (202,655.98)</b>	<b>59.51%</b>	
52040 • Communication Services					



2:41 PM  
02/06/25  
Accrual Basis

**Lincoln-Sewer Maintenance District 1 Wastewater Authority**  
**Operations Fund Income Statement**  
July through December 2024



	Jul - Dec 24	Budget	Variance	% of Budget	Notes
SC2085 • Telephone	\$ 2,520.76	\$ 2,000.00	\$ 520.76	126.04%	
52040 • Communication Services • Other					
<b>Total 52040 • Communication Services</b>	<b>\$ 2,520.76</b>	<b>\$ 2,000.00</b>	<b>\$ 520.76</b>	<b>126.04%</b>	
52080 • Insurance Services					
SC2140 • Insurance Services	\$ 85,999.77	\$ 250,000.00	\$ (164,000.23)	34.4%	
52080 • Insurance Services • Other					
<b>Total 52080 • Insurance Services</b>	<b>\$ 85,999.77</b>	<b>\$ 250,000.00</b>	<b>\$ (164,000.23)</b>	<b>34.4%</b>	
52160 • Maintenance • Service					
SC2270 • Equipment Maintenance	\$ 28,810.74	\$ 64,068.00	\$ (35,257.26)	44.97%	
52160 • Maintenance • Service • Other					
<b>Total 52160 • Maintenance • Service</b>	<b>\$ 28,810.74</b>	<b>\$ 64,068.00</b>	<b>\$ (35,257.26)</b>	<b>44.97%</b>	
52240 • Member, Reg, Warr					
SC2550 • Prof Membership		\$ 1,000.00	\$ (1,000.00)		
52240 • Member, Reg, Warr • Other					
<b>Total 52240 • Member, Reg, Warr</b>		<b>\$ 1,000.00</b>	<b>\$ (1,000.00)</b>		
52360 • Prof/Special Services					
SC2810 • Financial		\$ 110,000.00	\$ (110,000.00)		
SC2940 • Consulting	\$ 246,190.09	\$ 774,480.00	\$ (528,289.91)	31.79%	
52360 • Prof/Special Services • Other					
<b>Total 52360 • Prof/Special Services</b>	<b>\$ 246,190.09</b>	<b>\$ 884,480.00</b>	<b>\$ (638,289.91)</b>	<b>27.83%</b>	
52370 • Prof/Special Services					
SC3130 • Legal	\$ 40,624.50	\$ 100,000.00	\$ (59,375.50)	40.63%	
52370 • Prof/Special Services • Other					
<b>Total 52370 • Prof/Special Services</b>	<b>\$ 40,624.50</b>	<b>\$ 100,000.00</b>	<b>\$ (59,375.50)</b>	<b>40.63%</b>	
52380 • Prof/Special Services					
SC3310 Water & Sewage	\$ 2,029,940.26	\$ 3,365,033.00	\$ (1,335,092.74)	60.33%	
SC3320 • Environ, Ecological	\$ 1,918.00				FY24 Permit Fees
52380 • Prof/Special Services • Other					
<b>Total 52380 • Prof/Special Services</b>	<b>\$ 2,031,858.26</b>	<b>\$ 3,365,033.00</b>	<b>\$ (1,333,174.74)</b>	<b>60.36%</b>	
52400 • Information Technology					
SC3360 • IT Services	\$ 63,949.67	\$ 100,000.00	\$ (36,050.33)	63.95%	
52400 • Information Technology • Other					



2:41 PM  
02/06/25  
Accrual Basis

Lincoln-Sewer Maintenance District 1 Wastewater Authority  
Operations Fund Income Statement  
July through December 2024



	Jul - Dec 24	Budget	Variance	% of Budget	Notes
Total 52400 - Information Technology	\$ 63,949.67	\$ 100,000.00	\$ (36,050.33)	63.95%	
52450 - Prof/Special Services					
SC3480 - Short Term Rental	\$ 30,975.57	\$ 64,000.00	\$ (33,024.43)	48.4%	
52450 - Prof/Special Services - Other					
Total 52450 - Prof/Special Services	\$ 30,975.57	\$ 64,000.00	\$ (33,024.43)	48.4%	
52510 - Commissioner's Fees	\$ 9,600.00	\$ 9,600.00	\$ (9,600.00)		
52570 - Advertising	\$ 7,500.00	\$ 7,500.00	\$ (7,500.00)		
52800 - Utilities					
SC4340 - Utilities	\$ 837,591.16	\$ 1,882,000.00	\$ (1,044,408.84)	44.51%	
52800 - Utilities - Other					
Total 52800 - Utilities	\$ 837,591.16	\$ 1,882,000.00	\$ (1,044,408.84)	44.51%	
52810 - Goods					
SC4456 - Sewage Treatment	\$ 458,142.48	\$ 916,285.00	\$ (458,142.52)	50.0%	
52810 - Goods - Other					
Total 52810 - Goods	\$ 458,142.48	\$ 916,285.00	\$ (458,142.52)	50.0%	
53190 - Taxes and Assessments					
SC4870 - Taxes and Assessments	\$ 59,795.60	\$ 90,000.00	\$ (30,204.40)	66.44%	
53190 - Taxes and Assessments - Other					
Total 53190 - Taxes and Assessments	\$ 59,795.60	\$ 90,000.00	\$ (30,204.40)	66.44%	
53390 - Cost Plan Allocation	\$ 122.00				
59000 - Debt Payments		\$ 2,705,200.00	\$ (2,705,200.00)		
Depreciation Expense	\$ 3,219,055.31				
Total Expense	\$ 7,403,179.93	\$ 10,941,166.00	\$ (3,537,986.07)	67.66%	
Net Ordinary Income	\$ (574,480.88)	\$ 2,486,564.00	\$ (3,061,044.88)	-23.1%	
Other Income/Expense					
Other Expense					
Capital Improvement Projects					
Capital Improvements - General	\$ 50,622.00	\$ 626,000.00	\$ (575,378.00)	8.09%	
CIP - Network / Cybersecurity					
CIP - Sewer Pipeline					
CIP - WWTRF Improvements	\$ 585,769.29	\$ 2,400,000.00	\$ (1,814,230.71)	24.41%	
Total Capital Improvement Projects	\$ 636,391.29	\$ 3,026,000.00	\$ (2,389,608.71)	21.03%	



2:41 PM  
02/06/25  
Accrual Basis

**Lincoln-Sewer Maintenance District 1 Wastewater Authority**  
**Operations Fund Income Statement**  
July through December 2024

	Jul - Dec 24	Budget	Variance	% of Budget	Notes
Total Other Expense	\$ 636,391.29	\$ 3,026,000.00	\$ (2,389,608.71)	21.03%	
Net Other Income	\$ (636,391.29)	\$ (3,026,000.00)	\$ 2,389,608.71	21.03%	
	<u>\$ (1,210,872.17)</u>	<u>\$ (539,436.00)</u>	<u>\$ (671,436.17)</u>	<u>224.47%</u>	

Footnotes      This Income Statement includes June 2024 County Audit Adjustments

---



---



---



## General Manager's Report (Cont.)

### GM Work in Progress

- WWTRF Improvement Project
  - CEQA Evaluation
  - Filter Evaluation
  - RFP for Revenue Requirements Model/Reserve Policy Recommendations
- WWTRU Policy Changes Finalization
- Development of Board Workshop
- LiSWA Trunk Sewer Pipeline Condition Assessment CIP
  - RFP Development
- CSRMA Conference
- Authority Engineer Reassignment – Division of Safety of Dams (DSOD) Requirement
- March Board Meeting Agenda
  - Independent Audit Report Results
  - WWTRU Policy Changes
  - WWTRF Optimization Studies Progress Update



## MEMORANDUM

### LINCOLN-SMD1 WASTEWATER AUTHORITY

---

TO: LISWA BOARD OF DIRECTORS DATE: FEBRUARY 14, 2025  
FROM: JIM MULLIGAN, GENERAL MANAGER  
SUBJECT: REVISIONS TO THE FISCAL YEAR 2024-2025 CAPITAL IMPROVEMENTS PROJECT  
(CIP) LIST

#### **RECOMMENDED ACTION**

Approve revisions to the Fiscal Year (FY) 2024-2025 Capital Improvements Project List.

#### **BACKGROUND**

A mid-year review of the budgeted CIP projects was conducted to capture insights gained over the last six months of operation by the new WWTRF contract operator, Jacobs. Through this review, existing CIPs and proposed new CIPs were discussed and prioritized. The results of the review updated project budget estimates, re-prioritized two projects to FY 25-26, moved two projects to the Wastewater Treatment and Reclamation Facility (WWTRF) Improvements Project, and added nine new projects. These changes to the CIP list do not increase the FY 24-25 budget. Table 1 provided on the following page summarizes the results of this mid-year CIP review.

#### **ENVIRONMENTAL CLEARANCE**

The recommended action is not a project pursuant to California Environmental Quality Guidelines Section 15368.

#### **FISCAL IMPACT**

There is no fiscal impact to the FY 24-25 budget.

**TABLE 1. PROPOSED FY 24-25 CIP BUDGET REVISIONS**

<b>FY 24-25 APPROVED ITEMS</b>	<b>BUDGET</b>	<b>UPDATED ESTIMATE</b>	<b>BALANCE</b>	<b>COMMENT</b>
2023-2024 SCADA Project	\$ 300,000	\$ 300,000	\$ -	No change
Stantec WWTRF Improvement Project Engineering	\$ 2,100,000	\$ 2,100,000	\$ -	No change
AC unit replacements in MCC 200, 480, 500	\$ 75,000	\$ 84,823	\$ (9,823)	Updated Estimate
Caustic Feed pump	\$ 8,000	\$ -	\$ 8,000	Reprioritized to FY 25-25
Clarifier Splitter gates (3)	\$ 70,000	\$ -	\$ 70,000	Reprioritized to FY 25-25
Hach turbidimeters and controllers for filters	\$ 40,000	\$ 36,000	\$ 4,000	Updated Estimate
LiSWA trunk sewer condition assessment	\$ 300,000	\$ 200,000	\$ 100,000	Updated Estimate
Biofilter removal and replacement	\$ 30,000	\$ -	\$ 30,000	Added to WWTRF Improvement CIP
Centrifuge #1 major service	\$ 150,000	\$ 98,000	\$ 52,000	Updated Estimate
Filter feed pump #2	\$ 200,000	\$ 170,437	\$ 29,563	Updated Estimate
Influent Pump 2B rebuild	\$ 35,000	\$ 13,216	\$ 21,784	Updated Estimate
Influent Pump 1B impeller	\$ 18,000	\$ -	\$ 18,000	Added to WWTRF Improvement CIP
	<b>\$ 3,326,000</b>	<b>\$ 3,002,476</b>	<b>\$ 323,524</b>	<b>Total FY 24-25</b>
<b>PROPOSED NEW ITEMS</b>	<b>BUDGET</b>	<b>UPDATED ESTIMATE</b>	<b>BALANCE</b>	<b>COMMENT</b>
Plug valves	\$ -	\$ 14,658	\$ (14,658)	New
UV service contract	\$ -	\$ 40,000	\$ (40,000)	New
Oxidation ditch wall pump	\$ -	\$ 5,700	\$ (5,700)	New
Security system upgrades (cameras)	\$ -	\$ 111,281	\$ (111,281)	New
SHT Mixer Gear box	\$ -	\$ 12,000	\$ (12,000)	New
Main access gate security upgrade	\$ -	\$ 9,685	\$ (9,685)	New
Secondary access gate security upgrade	\$ -	\$ 7,385	\$ (7,385)	New
Tank rehabilitation	\$ -	\$ 47,200	\$ (47,200)	New
Repair backflow device on potable water system	\$ -	\$ 12,526	\$ (12,526)	New
	<b>\$ -</b>	<b>\$ 260,435</b>	<b>\$ (260,435)</b>	<b>Total New Projects</b>
			<b>\$ 323,524</b>	<b>FY 24-25 Balance</b>
			<b>\$ 63,089</b>	<b>Budget Impact (None)</b>



## MEMORANDUM

### LINCOLN-SMD1 WASTEWATER AUTHORITY

---

TO: LISWA BOARD OF DIRECTORS  
FROM: JIM MULLIGAN, GENERAL MANAGER  
SUBJECT: WASTEWATER TREATMENT UNIT (WWTRU) UPDATE

DATE: FEBRUARY 14, 2025

#### **RECOMMENDED ACTION**

Informational only – no action required.

#### **BACKGROUND**

When LiSWA was established in November 2022, a rate setting policy was developed to establish the standard for calculating the units of measure to be used in determining the share of cost for the provision of wastewater services to LiSWA members (City of Lincoln and the SMD-1 area of the County of Placer). The policy also set requirements for updating the units of measure. The unit of measure is the Wastewater Treatment and Reclamation Unit (“WWTRU”) and is synonymous to the term equivalent dwelling unit (“EDU”). The policy is titled “Unit Definition for Cost-of-Service Calculation and Reporting Policy” and includes a table indicating the ordinance code (use) type (single family residential, warehouse etc.) and the associated number of TRUs associated with that code type. A copy of the policy is included as Attachment to this staff report.

The policy underpinnings included member agreement to have use types and their associated number of WWTRUs be the same regardless of the location of the unit. For example, a grocery store of the same size and use would be allocated the same number of WWTRUs and charged the same in the City of Lincoln (City) as in the SMD-1 area of the County of Placer (County) and a single-family home would be charged the same in the City as the County.

After roughly a year of implementing the policy, staff from both the City and County found some unanticipated results for a small number of businesses that are subject to the fee or charge related to the WWTRU. These specific businesses do not closely align to the existing categories for businesses. As such, additional and more discreet use categories are needed. LiSWA and its member agencies agreed to examine and update the methodology used to calculate a WWTRU. The analysis included a detailed evaluation into each type of business use within each member jurisdiction and the square footage of the use. Winter water demands were used as a surrogate to validate the WWTRU assignment to use categories.

As the member agency’s analyses nears completion, representatives from the City and County have been asked to update the LiSWA Board on their efforts toward revisions to the WWTRU methodology



and the LiSWA policy. We expect to bring an updated policy to the Board at its March 2025 regular meeting for consideration and action.

**ATTACHMENT:** Unit Definition for Cost-of-Service Calculation and Reporting Policy

**LINCOLN-SMD1 WASTEWATER AUTHORITY  
UNIT DEFINITION FOR COST-OF-SERVICE CALCULATION AND REPORTING POLICY**

**I. PURPOSE**

The purpose of this Unit Definition for Cost-of-Service Calculation and Reporting Policy ("**Policy**") is to establish the standard for calculating the units of measure to be used in determining the share of cost for the provision of wastewater services to Lincoln-SMD1 Wastewater Authority ("**LiSWA**") members and setting requirements for updating the units as described and defined below.

**II. BACKGROUND**

The LiSWA was established on November 30, 2022, by the execution of a Joint Powers Agreement ("**JPA**") between the City of Lincoln ("**City**") and the County of Placer ("**County**"), collectively the "Member Agencies". The JPA set forth that the cost of service applied to each Member Agency would be the percentage of Equivalent Dwelling Units ("**EDUs**") that are connected and providing flow to the Wastewater Treatment and Reclamation Facility ("**WWTRF**").

Each Member Agency, in their own regulations, define EDUs differently; therefore it is important for LiSWA to provide a clear written criteria for counting and reporting of the units of measure for the determination of the cost of service for each Member Agency.

**III. POLICY**

The Policy of the LiSWA for establishing the units of measurement for the determination of the cost of service for the Member Agency is provided in three parts; (1) the Definition of Unit for Cost of Service; (2) Standard Factors for the units; and (3) the updating and reporting of the units.

A. Definition of Unit for Cost-of-Service

The Wastewater Treatment and Reclamation Unit ("**WWTRU**") will be the unit of measure for determining the cost of service to each Member Agency. The WWTRU replaces all references to EDUs in the JPA, or any other document created by LiSWA or that was used during the establishment of the LiSWA.

B. WWTRU Standard Factors

The following table titled **LiSWA WWTRU Standard Factors** details the appropriate WWTRU factor for each connection into the wastewater system for the purpose of calculating the total WWTRUs contributing to the wastewater facility operated by LiSWA.

LiSWA WWTRU Standard Factors		
Ordinance Code Types of Service	Matched Land Use Code Descriptions	LiSWA WWTRU Factors
Residential		
Single-Family Residential	SINGLE FAM RES, HALF PLEX	1 WWTRU per dwelling unit
	RESIDENCE ON COMMERCIAL LAND	
	RESIDENTIAL, AUXILIARY IMP	
	SINGLE FAM RES, CONDO	
Multi-Family Residential	APARTMENTS, 4 UNITS OR MORE	0.714 WWTRU per dwelling unit
	3 SINGLE FAM RES, TRIPLEX	
Duplex	2 SINGLE FAM RES, DUPLEX	0.771 WWTRU per dwelling unit
Mobile homes	MOBILE HOME PARK	0.714 WWTRU per space
	MOBILE HOME IN M H PARK	
	MOBILE HOME OUTSIDE OF PARK	
--	RV Parks <sup>(a)</sup>	0.357 WWTRU per space
Active Adult Residential	<sup>(b)</sup>	0.714 per Single Family Dwelling
Hotel/Motel with kitchen	HOTELS, MOTELS, RESORTS	1 WWTRU per dwelling unit
Hotel/Motel without kitchen	HOTELS, MOTELS, RESORTS	0.5 WWTRU per dwelling unit
Low density		
Parking garages	PARKING LOTS	1 WWTRU per 6,000 sq. ft.
Warehouses	WAREHOUSE	1 WWTRU per 6,000 sq. ft.
Churches without kitchen or meeting hall	CHURCHES	1 WWTRU per 6,000 sq. ft.
--	MISC. PUBLIC BUILDINGS	1 WWTRU per 6,000 sq. ft.
Medium density		
Storage facilities	MINI-STORAGE, COVERED STORAGE	1 WWTRU per 3,000 sq. ft. of office space(c)
Theaters	THEATER, BOWLING ALLEY	1 WWTRU per 3,000 sq. ft.
Bowling/entertainment centers (without kitchen)		
Offices	OFFICE GENERAL	1 WWTRU per 3,000 sq. ft.
	OFFICE CONDO	
Auditoriums, halls, and lodges	LODGES, HALLS	1 WWTRU per 3,000 sq. ft.

Low usage retail stores (hardware, appliance, furniture)	COMMERCIAL STORE	1 WWTRU per 3,000 sq. ft.
Retail stores	SHOPPING CENTER	1 WWTRU per 3,000 sq. ft.
Barber/beauty shops (with lavatories)	SUBURBAN STORE	1 WWTRU per 1,500 sq. ft.
Banks and financial offices	BANKS, S&L'S, CREDIT UNION	1 WWTRU per 3,000 sq. ft.
--	UTILITIES, PUBLIC & PRIVATE	1 WWTRU per 3,000 sq. ft.
--	AUTO SALES, REPAIR	1 WWTRU per 3,000 sq. ft.
--	LIGHT INDUSTRIAL	1 WWTRU per 3,000 sq. ft.
--	MISCELLANEOUS INDUSTRIAL	1 WWTRU per 3,000 sq. ft.
High density		
Markets (without disposal)	MINI-MARKETS, NO GAS	1 WWTRU per 1,500 sq. ft.
Markets (with disposal)		1 WWTRU per 1,500 sq. ft.
Medical/dental offices	OFFICE MEDICAL/DENTAL	1 WWTRU per 1,500 sq. ft.
Sports/fitness centers	TENNIS, SWIMMING CLUBS	1 WWTRU per 1,500 sq. ft.
Schools	SCHOOLS	1 WWTRU per 1,500 sq. ft.
	DAY CARE CENTERS	1 WWTRU per 1,500 sq. ft.
Service stations	MINI-MARKET WITH GAS	1 WWTRU per 1,500 sq. ft.
	SERVICE STATION	
--	AIRPORT	1 WWTRU per 1,500 sq. ft.
--	HEAVY INDUSTRIAL	1 WWTRU per 1,500 sq. ft.
--	MINING QUARRY	1 WWTRU per 1,500 sq. ft.
--	CAMPS & PARKS, GENERAL	1 WWTRU per 1,500 sq. ft.
--	MISCELLANEOUS RECREATIONAL	1 WWTRU per 1,500 sq. ft.
--	NON-PROFIT CAMPS/PARKS	1 WWTRU per 1,500 sq. ft.
--	CEMETERIES	1 WWTRU per 1,500 sq. ft.
--	GOLF COURSE	1 WWTRU per 1,500 sq. ft.
Hospitals	HOSPITALS COMMUNITY	0.5 WWTRU per Bed
Rest home	HOSPITALS CONVALESCENT	0.33 WWTRU per Bed

Convalescent hospital		1 WWTRU per 1,500 sq. ft.
Memory care facility		1 WWTRU per 1,500 sq. ft.
Special commercial users		
Carwashes	Carwashes <sup>(a)</sup>	1 WWTRU per 200 sq. ft
Laundromats	Laundromats <sup>(a)</sup>	1 WWTRU per 100 sq. ft
Restaurants, bakeries, cafes	RESTAURANTS, COCKTAIL LOUNGES	1 WWTRU per 500 sq. ft
	FAST FOOD RESTAURANT	
Bars	RESTAURANTS, COCKTAIL LOUNGES	1 WWTRU per 500 sq. ft
Delis/coffee shops w/out cooking facilities		1 WWTRU per 1,500 sq. ft
Mortuaries	Mortuaries <sup>(a)</sup>	1 WWTRU per 250 sq. ft
--	COMMON AREA	0 WWTRU
--	VACANT	0 WWTRU
Permitted Significant Industrial Users		
Low Strength - High Quantity		$\frac{\text{gpd flows}}{(((\text{gpd flows} - 25,000)/1000) \times 2.15) + 215}$
High Strength		$(\text{gpd}/215) \times (0.61 + (\text{BOD}/200) \times 0.22 + (\text{TSS}/200) \times 0.17) + \text{special treatment or handling costs}$
<p>(a) Not a current Land Use Code Description</p> <p>(b) Active Adult Residential assigned 0.714 WWTRUs per dwelling unit regardless of Land Use Code Description.</p> <p>(c) WWTRUs assigned solely based on square footage of office space.</p> <p>gpd = gallons per day  BOD = Biological Oxygen Demand  TSS = Total Suspended Solids</p>		

C. Reporting

The JPA established the beginning cost allocation to the Member Agencies based upon respective EDU contributions to the WWTRF. The reference of EDU in the calculation is equivalent to a WWTRU defined in this policy.

The initial cost allocation for LiSWA is as follows:

8,338 (County) WWTRUs / 22,194 (City) WWTRUs  
8,338 + 22,194 = 30,532 Total WWTRUs  
8,332 / 30,532 = 27.3% (County)  
22,194 / 30,532 = 72.7% (City)

This is based on the active connections as of 08/31/2022, as stated in the JPA.

Each Member Agency shall provide to LiSWA at the end of each quarter of the year, a report including current and new connections to their wastewater system and their associated WWTRUs for that type of connection based on the factors in the table above titled LiSWA WWTRU Standard Factors.

The first report to LiSWA shall be provided no later than June 30, 2023, and shall account for all WWTRU's connected from August 31, 2022 to March 31, 2023.

## January 2024 LWWTRF Operations Report

2-14-25

### Highlights

- 178.798 Million Gallons (MG) of influent, 2.099 MG of effluent was sent to reclamation and 184.878 MG of effluent flow was sent to Auburn Ravine during January.
- All centrifuge flow meters were replaced this month. See photos 1. and 2.
- A centrifuge polymer trial was conducted in December. A new polymer was selected for its performance and special Jacobs pricing. Annual savings are expected at around \$50,000 annually.
- Greenhouse biosolids trial utilizing Magnesium Hydroxide will begin February 12<sup>th</sup>.
- A treatment plant tour was provided to Leadership Lincoln on January 16<sup>th</sup>. Photo 3.

### Compliance

-SGS, one of our contract labs, missed running one of our Maturation Pond nitrate samples during the hold time. This is considered a monitoring violation but won't result in a fine.

#### Major Equipment Out of Service

Equipment	Failure Date	Redundancy	Problem	Solution	Estimated Repair Cost	Estimated Return to Service Date
Filter Feed Pump #2	3-25-24	1 of 4	Motor windings are broken down. Failed in wet weather.	Pump to be replaced with plant upgrade. Spare pump to be purchased ASAP.	TBD	TBD
WAS 14" discharge and isolation valves at SHT	11-23-24	N/A	Valves broke when opening to put SHT back in service	Replace original valves. LISWA to purchase.	\$16,000	TBD
Maturation Pond Outlet Pump VFD	10-17-24	1 of 1	Drive failed during a plant power failure event.	Replacing drive with spare. Requires start up services.	\$1100	Feb. 14

Photo 1



Photo2

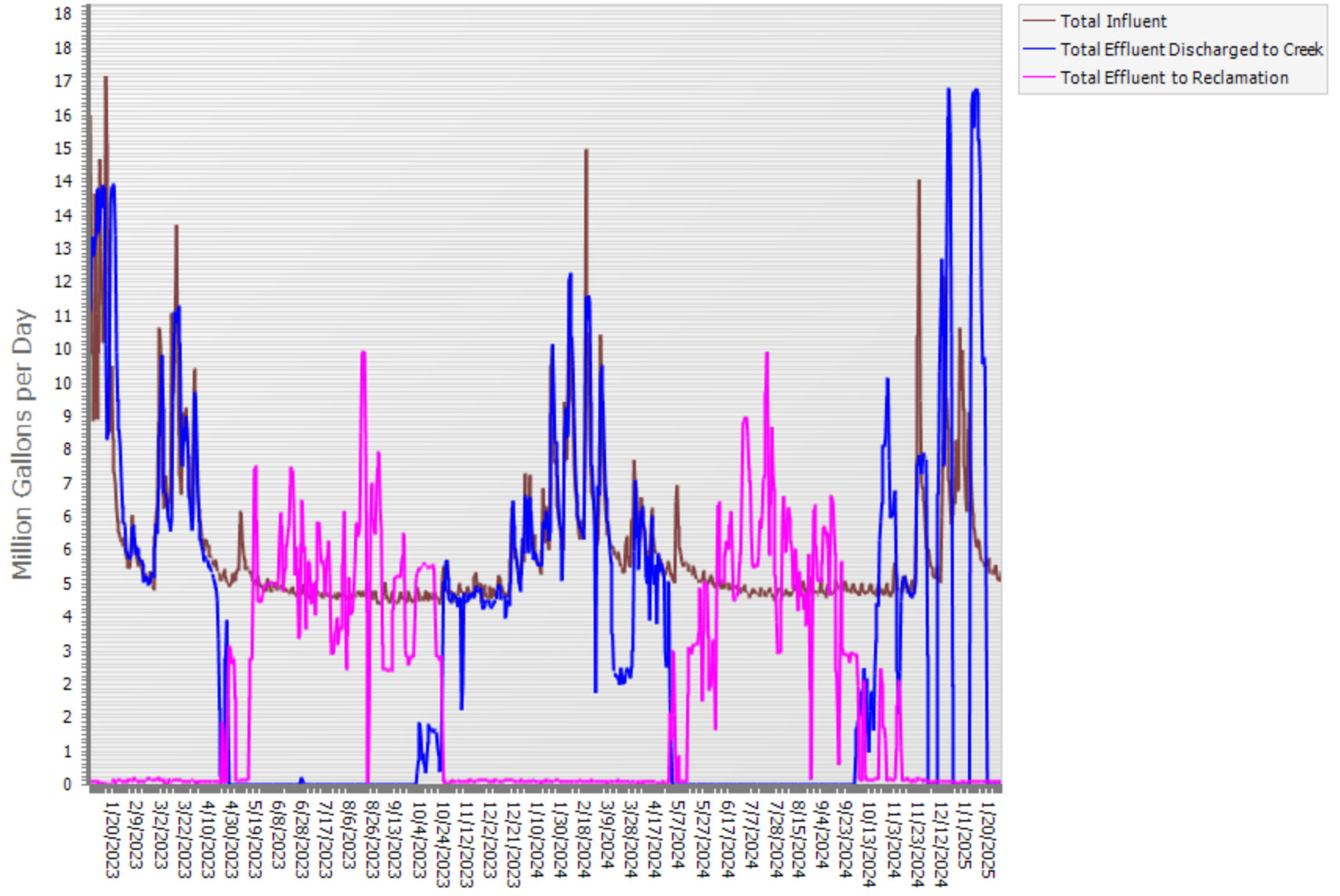




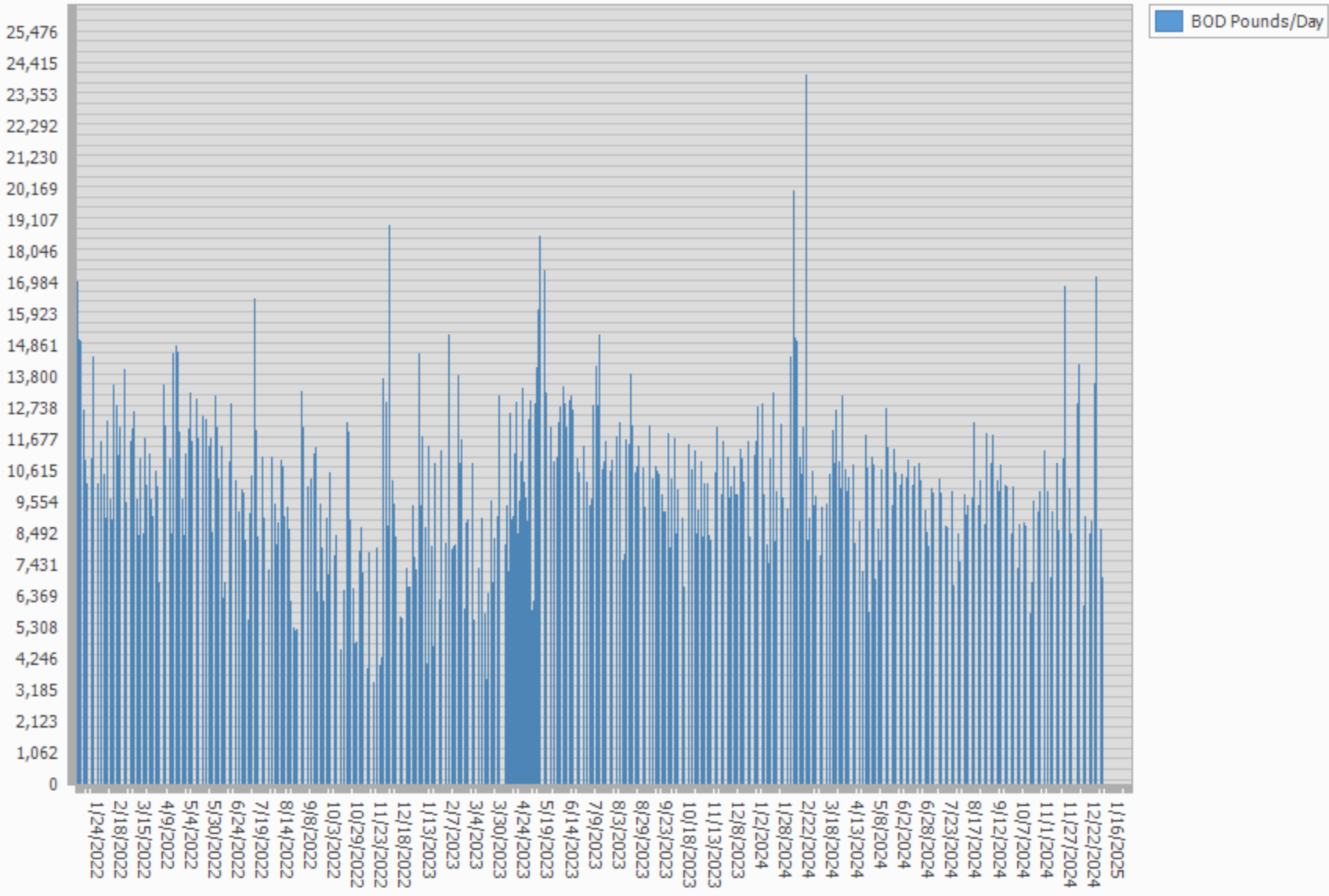
Photo 3

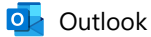


# Total Treatment Plant Flow



# WWTRF Influent BOD Pounds/Day





**LSW - Completed Work Order Summary - Last Month**

From Tina Stone <tina.stone@jacobs.com>  
 Date Mon 2/3/2025 2:45 PM  
 To Hengst, Gary <Gary.Hengst@jacobs.com>

1 attachment (263 KB)  
 RPT-ENTOMIMUNIWIW-CLMNQ-WOCLIST\_RC\_12107-2-3-2025.HTM;

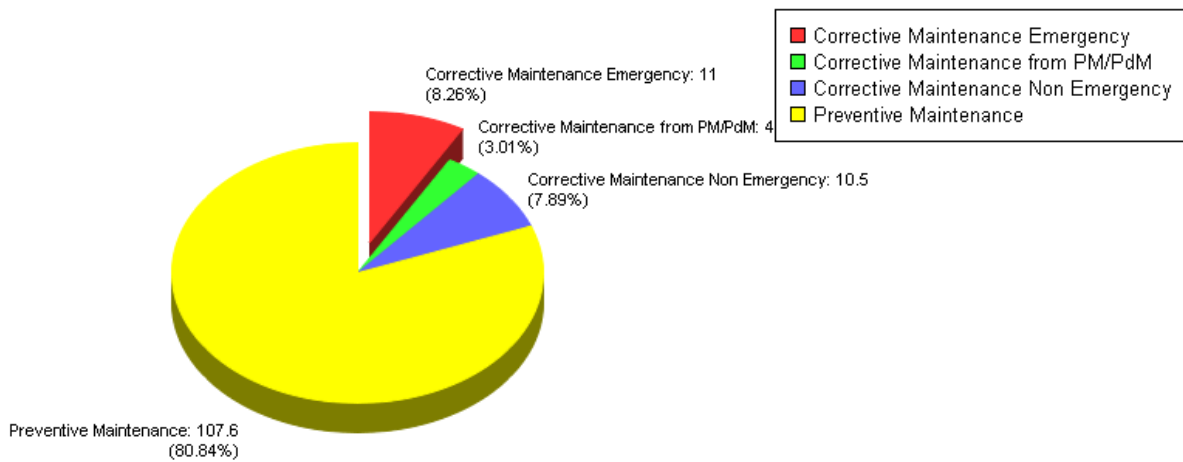
January monthly report



**LSW - Completed Work Order Summary - Last Month**

Sent: 2/3/2025 2:42 PM

**Work Order Actual Hours by WO Type**



**Report Criteria**

- Complete Date is between '1/1/2025' AND '1/31/2025'
- Repair Center is Lincoln Surface Water Project
- Failed Work Order? No

Work Order Type	Work Order #	Asset ID	Asset Name	Reason	Labor Report	Actual Hours	Cost Labor Actual	Cost Part Actual	Cost Contractor Actual	Cost Misc Actual	Cost Total Actual	Comp Date
CM-E	LSW-3483133	LSW-INST-PH-87	DAF Unit 2 Inlet (at splitter box) pH Probe S/N 190446497	DAF Unit 2 Inlet (at splitter box) pH Probe S/N 190446497 (LSW-INST-PH-87)	ATC, modified mounts and surrounding equipment	3	\$ 287.94	\$ 0.00	\$ 0.00	\$ 0.00	\$ 287.94	1/9/2025 10:45:00 AM
				Stabilize pH and Turbidity probes for high flows.								
CM-E	LSW-3485718	LSW-INST-TEMP-IND-88	Lincoln Outfall R-2 Temperature Indication Transmitter	Lincoln Outfall R-2 Temperature Indication Transmitter (LSW-INST-TEMP-IND-88)	ATC ran new wire and placed probe back in service	4	\$ 237.30	\$ 0.00	\$ 0.00	\$ 0.00	\$ 237.30	1/28/2025 1:40:00 PM
				Temperature has failed high again though not full scale yet.								

Work Order Type	Work Order #	Asset ID	Asset Name	Reason	Labor Report	Actual Hours	Cost Labor Actual	Cost Part Actual	Cost Contractor Actual	Cost Misc Actual	Cost Total Actual	Comp Date
CM-E	LSW-3486032	LSW-TANK-AST-METAL-S-1	Standby Generator 1 Fuel Tank TNK-61010	Standby Generator 1 Fuel Tank TNK-61010 (LSW-TANK-AST-METAL-S-1) Tank leaking at the front of tank out of piping.	ATC	4	\$ 383.92	\$ 0.00	\$ 0.00	\$ 0.00	\$ 383.92	1/27/2025 6:56:00
<b>CM-E - 3 Total:</b>						<b>11</b>	<b>\$909.16</b>	<b>\$0.00</b>	<b>\$0.00</b>	<b>\$0.00</b>	<b>\$909.16</b>	
<b>CM-NE</b>												
CM-NE	LSW-3480557	LSW-VEHICLES-TRUCK-MDM-39	2005 Autocar/Heil Garbage Truck (converted to a yard tractor) #729	Yard Goat king pin not locking trailer into place.	ATC	2	\$ 191.96	\$ 0.00	\$ 0.00	\$ 0.00	\$ 191.96	1/2/2025 10:02:00 AM
CM-NE	LSW-3480559	LSW-Facility-11-VLV	Headworks - Influent Pump Area Valves (Grouped)	Headworks - Influent Pump Area Valves (Grouped) Turn off both valves on City water backflow device to determine if they work.	ATC-Verified isolation	0.5	\$ 30.56	\$ 0.00	\$ 0.00	\$ 0.00	\$ 30.56	1/2/2025 9:59:00
CM-NE	LSW-3480891	LSW-Facility-05	Oxidation Ditch Area	Hand railing for the staircase at OX Ditch 2 on the back side towards the out is broken at the bottom	ATC	1	\$ 95.98	\$ 0.00	\$ 0.00	\$ 0.00	\$ 95.98	1/7/2025 11:28:00 AM
CM-NE	LSW-3485531	LSW-ELEC-PANEL-CONTROL-2061	DAF Unit 2 Control Panel	DAF #2. Local skimmer speed controller is not working.	Replaced speed control	1	\$ 83.54	\$ 0.00	\$ 0.00	\$ 0.00	\$ 83.54	1/27/2025 1:54:00 PM
CM-NE	LSW-3485708	LSW-TANK-BASIN-21222	Oxidation Ditch 2 Anoxic Basin 2 Mixer 2B MXR-21222 Position	Anoxic Mixer 2b Failed	ATC, Removed old unit from service and placed rebuilt spare in its place	3	\$ 287.94	\$ 0.00	\$ 0.00	\$ 0.00	\$ 287.94	1/14/2025 2:11:00
CM-NE	LSW-3488531	LSW-GRIT-COMPACTOR-3	Screenings Compactor 3 CMP-13321	H/W screen #3 fault	Reset and operational	1	\$ 83.54	\$ 0.00	\$ 0.00	\$ 0.00	\$ 83.54	1/22/2025 1:54:00 PM
CM-NE	LSW-3491179	LSW-Facility-11-1	Headworks Area	Headworks Area	ATC	1	\$ 95.98	\$ 0.00	\$ 0.00	\$ 0.00	\$ 95.98	1/30/2025 1:07:00 PM
CM-NE	LSW-3491180	LSW-INST-LIT-298	Acid Storage Tank 2 LE-LIT-52251	Acid Storage Tank 2 LE-LIT-52251 (LSW-INST-LIT-298)  Meter reading should be 0.0 feet. SCADA shows 11.0 feet. Meter can be turned off or calibrated.	ATC	0.5	\$ 30.69	\$ 0.00	\$ 0.00	\$ 0.00	\$ 30.69	1/30/2025 1:04:00 PM
CM-NE	LSW-3491181	LSW-INST-LIT-300	PAC Storage Tank 1 LIT L-52151	PAC Storage Tank 1 LIT L-52151 (LSW-INST-LIT-300)  Meter reading should be 0.0 feet. SCADA shows 9.9 feet. Meter can be turned off or calibrated.	ATC	0.5	\$ 30.69	\$ 0.00	\$ 0.00	\$ 0.00	\$ 30.69	1/30/2025 1:02:00 PM
<b>CM-NE - 9 Total:</b>						<b>10.5</b>	<b>\$930.88</b>	<b>\$0.00</b>	<b>\$0.00</b>	<b>\$0.00</b>	<b>\$930.88</b>	
<b>CMP</b>												
CMP	LSW-3480577	LSW-ELEC-VFD-M-84	RAS Pump 1C PMP-27113 VFD	Follow-up to Work Order #3480252 (QUARTERLY VFD INSPECTION). Please see Task(s) for	Installed new fan	2	\$ 167.08	\$ 0.00	\$ 0.00	\$ 35.00	\$ 202.08	1/10/2025 9:54:00

Work Order Type	Work Order #	Asset ID	Asset Name	Reason	Labor Report	Actual Hours	Cost Labor Actual	Cost Part Actual	Cost Contractor Actual	Cost Misc Actual	Cost Total Actual	Comp Date
				additional information.								
CMP	LSW-3480579	LSW-ELEC-VFD-M-89	OD Recycle Pump 1A P-21131 VFD	Follow-up to Work Order #3480244 (QUARTERLY VFD INSPECTION). Please see Task(s) for additional information.	Installed new fan	2	\$ 114.54	\$ 0.00	\$ 0.00	\$ 35.00	\$ 149.54	1/10/2025 9:52:00 AM
<b>CMP - 2 Total:</b>						<b>4</b>	<b>\$281.62</b>	<b>\$0.00</b>	<b>\$0.00</b>	<b>\$70.00</b>	<b>\$351.62</b>	
<b>PM</b>												
PM	LSW-3465167	LSW-TANK-CHANNEL-17	UV Channel 4	MONTHLY UV CHANNEL INSPECTION	ATC	2	\$ 114.54	\$ 0.00	\$ 0.00	\$ 0.00	\$ 114.54	1/17/2025 10:30:00 AM
PM	LSW-3465168	LSW-TANK-CHANNEL-18	UV Channel 5	MONTHLY UV CHANNEL INSPECTION	ATC	1	\$ 57.27	\$ 0.00	\$ 0.00	\$ 0.00	\$ 57.27	1/17/2025 10:31:00 AM
PM	LSW-3471707	LSW-LAB-EQUIP-FOLDER-661	Lab RTD Thermometer	ANNUAL LAB THERMOMETER CERTIFICATION	ATC	1	\$ 57.27	\$ 0.00	\$ 0.00	\$ 0.00	\$ 57.27	1/16/2025 1:10:00 PM
PM	LSW-3473620	LSW-Facility	Lincoln Facility	WEEKLY EYEWASH CHECKSHEET	ATC	2	\$ 114.54	\$ 0.00	\$ 0.00	\$ 0.00	\$ 114.54	1/2/2025 9:16:00 AM
PM	LSW-3476522	LSW-Facility	Lincoln Facility	WEEKLY EYEWASH CHECKSHEET	ATC	2	\$ 114.54	\$ 0.00	\$ 0.00	\$ 0.00	\$ 114.54	1/2/2025 9:17:00 AM
PM	LSW-3477322	LSW-PUMP-PC-97	Centrifuge 1 Cake Pump PMP-76111	MONTHLY SEEPEX CAKE PUMP IINSPECTION	ATC	0.5	\$ 48.00	\$ 0.00	\$ 0.00	\$ 0.00	\$ 48.00	1/7/2025 8:55:00 AM
PM	LSW-3477323	LSW-PUMP-PC-96	Centrifuge 3 Cake Pump PMP-76113	MONTHLY SEEPEX CAKE PUMP IINSPECTION	ATC	0.5	\$ 48.00	\$ 0.00	\$ 0.00	\$ 0.00	\$ 48.00	1/7/2025 8:55:00 AM
PM	LSW-3480185	LSW-BLOWER-PD-M-1	Solids Holding Tank 1 Blower BLR-71111	MONTHLY SHT BLOWER INSPECTION	ATC	0.5	\$ 48.00	\$ 0.00	\$ 0.00	\$ 0.00	\$ 48.00	1/6/2025 11:53:00 AM
PM	LSW-3480186	LSW-BLOWER-PD-M-2	Solids Holding Tank 1 Blower BLR-71112	MONTHLY SHT BLOWER INSPECTION	ATC	0.5	\$ 48.00	\$ 0.00	\$ 0.00	\$ 0.00	\$ 48.00	1/6/2025 11:54:00 AM
PM	LSW-3480188	LSW-PUMP-ROTARY-LOBE-7	Solids Feed Pump 1A PMP-72111	MONTHLY VOGLESANG PUMP INSPECTION	ATC	0.5	\$ 47.99	\$ 0.00	\$ 0.00	\$ 0.00	\$ 47.99	1/9/2025 2:06:00 PM
PM	LSW-3480189	LSW-PUMP-ROTARY-LOBE-6	Solids Feed Pump 1B PMP-72112	MONTHLY VOGLESANG PUMP INSPECTION	ATC	0.5	\$ 47.99	\$ 0.00	\$ 0.00	\$ 0.00	\$ 47.99	1/9/2025 2:07:00 PM
PM	LSW-3480190	LSW-PUMP-ROTARY-LOBE-5	Solids Feed Pump 1C PMP-72113	MONTHLY VOGLESANG PUMP INSPECTION	ATC	0.5	\$ 47.99	\$ 0.00	\$ 0.00	\$ 0.00	\$ 47.99	1/9/2025 2:08:00 PM
PM	LSW-3480191	LSW-ELEC-VFD-M-44	DAF Drive 1 DRV-33111 VFD	QUARTERLY VFD INSPECTION	ATC	0.3	\$ 25.06	\$ 0.00	\$ 0.00	\$ 0.00	\$ 25.06	1/2/2025 1:06:00 PM
PM	LSW-3480192	LSW-ELEC-VFD-M-45	DAF Drive 2 DRV-33211 VFD	QUARTERLY VFD INSPECTION	atc	0.3	\$ 25.06	\$ 0.00	\$ 0.00	\$ 0.00	\$ 25.06	1/2/2025 1:11:00 AM
PM	LSW-3480193	LSW-ELEC-VFD-M-46	DAF Pressure Pump 1A PMP-33121 VFD	QUARTERLY VFD INSPECTION	atc	0.3	\$ 25.06	\$ 0.00	\$ 0.00	\$ 0.00	\$ 25.06	1/2/2025 1:15:00 PM
PM	LSW-3480194	LSW-ELEC-VFD-M-47	DAF Pressure Pump 1B PMP-33122 VFD	QUARTERLY VFD INSPECTION	atc	0.3	\$ 25.06	\$ 0.00	\$ 0.00	\$ 0.00	\$ 25.06	1/2/2025 1:25:00 PM
PM	LSW-3480195	LSW-ELEC-VFD-M-48	DAF Pressure Pump 1C PMP-33123 VFD	QUARTERLY VFD INSPECTION	atc	0.3	\$ 25.06	\$ 0.00	\$ 0.00	\$ 0.00	\$ 25.06	1/2/2025 1:16:00 PM
PM	LSW-3480196	LSW-ELEC-VFD-M-121	Drain Pump PMP-93120 - PMP-93220 VFD	QUARTERLY VFD INSPECTION	atc	0.3	\$ 25.06	\$ 0.00	\$ 0.00	\$ 0.00	\$ 25.06	1/2/2025 1:26:00 PM
PM	LSW-3480197	LSW-ELEC-VFD-M-51	EPS Pump 1 PMP-47111 VFD	QUARTERLY VFD INSPECTION	atc	0.3	\$ 25.06	\$ 0.00	\$ 0.00	\$ 0.00	\$ 25.06	1/2/2025 1:27:00 PM
PM	LSW-3480198	LSW-ELEC-VFD-M-52	EPS Pump 2 PMP-47112 VFD	QUARTERLY VFD INSPECTION	atc	0.3	\$ 25.06	\$ 0.00	\$ 0.00	\$ 0.00	\$ 25.06	1/2/2025 1:28:00 PM

Work Order Type	Work Order #	Asset ID	Asset Name	Reason	Labor Report	Actual Hours	Cost Labor Actual	Cost Part Actual	Cost Contractor Actual	Cost Misc Actual	Cost Total Actual	Comp Date
PM	LSW-3480199	LSW-ELEC-VFD-M-53	EPS Pump 3 PMP-47113 VFD	QUARTERLY VFD INSPECTION	atc	0.3	\$ 25.06	\$ 0.00	\$ 0.00	\$ 0.00	\$ 25.06	1/2/20; 1:35:00 PM
PM	LSW-3480200	LSW-ELEC-VFD-M-54	EPS Pump 4 PMP-47114 VFD	QUARTERLY VFD INSPECTION	atc	0.3	\$ 25.06	\$ 0.00	\$ 0.00	\$ 0.00	\$ 25.06	1/2/20; 1:35:00 PM
PM	LSW-3480201	LSW-ELEC-VFD-M-40	FFPS P1 PMP-32111 VFD	QUARTERLY VFD INSPECTION	atc	0.3	\$ 25.06	\$ 0.00	\$ 0.00	\$ 0.00	\$ 25.06	1/2/20; 1:39:00 PM
PM	LSW-3480202	LSW-ELEC-VFD-M-41	FFPS P2 PMP-32112 VFD	QUARTERLY VFD INSPECTION	atc	0.3	\$ 25.06	\$ 0.00	\$ 0.00	\$ 0.00	\$ 25.06	1/2/20; 1:40:00 PM
PM	LSW-3480203	LSW-ELEC-VFD-M-42	FFPS P3 PMP-32113 VFD	QUARTERLY VFD INSPECTION	atc	0.3	\$ 25.06	\$ 0.00	\$ 0.00	\$ 0.00	\$ 25.06	1/2/20; 1:42:00 PM
PM	LSW-3480204	LSW-ELEC-VFD-M-43	FFPS P4 PMP-32114 VFD	QUARTERLY VFD INSPECTION	atc	0.3	\$ 25.06	\$ 0.00	\$ 0.00	\$ 0.00	\$ 25.06	1/2/20; 1:43:00 PM
PM	LSW-3480205	LSW-ELEC-VFD-M-58	Filter Backwash Pump 1A PMP-39111 VFD	QUARTERLY VFD INSPECTION	atc	0.3	\$ 25.06	\$ 0.00	\$ 0.00	\$ 0.00	\$ 25.06	1/2/20; 1:43:00 PM
PM	LSW-3480206	LSW-ELEC-VFD-M-59	Filter Backwash Pump 1B PMP-39112 VFD	QUARTERLY VFD INSPECTION	ATC	0.15	\$ 12.53	\$ 0.00	\$ 0.00	\$ 0.00	\$ 12.53	1/3/20; 1:04:00 PM
PM	LSW-3480207	LSW-ELEC-VFD-M-56	Filter Flocculator 1A FLC-34121 VFD	QUARTERLY VFD INSPECTION	ATc	0.15	\$ 12.53	\$ 0.00	\$ 0.00	\$ 0.00	\$ 12.53	1/3/20; 1:07:00 PM
PM	LSW-3480208	LSW-ELEC-VFD-M-57	Filter Flocculator 1B FLC-34122 VFD	QUARTERLY VFD INSPECTION	ATC	0.15	\$ 12.53	\$ 0.00	\$ 0.00	\$ 0.00	\$ 12.53	1/3/20; 1:07:00 PM
PM	LSW-3480209	LSW-ELEC-VFD-M-55	Filter Rapid Mixer 1 MXR-34111 VFD	QUARTERLY VFD INSPECTION	ATC	0.15	\$ 12.53	\$ 0.00	\$ 0.00	\$ 0.00	\$ 12.53	1/3/20; 1:08:00 PM
PM	LSW-3480210	LSW-ELEC-VFD-M-64	IPS Pump 1A PMP-11111 VFD	QUARTERLY VFD INSPECTION	ATC	0.3	\$ 25.06	\$ 0.00	\$ 0.00	\$ 0.00	\$ 25.06	1/2/20; 10:08:00 AM
PM	LSW-3480211	LSW-ELEC-VFD-M-65	IPS Pump 1B PMP-11112 VFD	QUARTERLY VFD INSPECTION	ATC	0.3	\$ 25.06	\$ 0.00	\$ 0.00	\$ 0.00	\$ 25.06	1/2/20; 10:09:00 AM
PM	LSW-3480212	LSW-ELEC-VFD-M-66	IPS Pump 1C PMP-11113 VFD	QUARTERLY VFD INSPECTION	ATC	0.3	\$ 25.06	\$ 0.00	\$ 0.00	\$ 0.00	\$ 25.06	1/2/20; 10:12:00 AM
PM	LSW-3480213	LSW-ELEC-VFD-M-67	IPS Pump 2A PMP-11211 VFD	QUARTERLY VFD INSPECTION	ATC	0.3	\$ 25.06	\$ 0.00	\$ 0.00	\$ 0.00	\$ 25.06	1/2/20; 10:13:00 AM
PM	LSW-3480214	LSW-ELEC-VFD-M-68	IPS Pump 2B PMP-11212 VFD	QUARTERLY VFD INSPECTION	ATC	0.3	\$ 25.06	\$ 0.00	\$ 0.00	\$ 0.00	\$ 25.06	1/2/20; 10:15:00 AM
PM	LSW-3480215	LSW-ELEC-VFD-M-69	IPS Pump 2C PMP-11213 VFD	QUARTERLY VFD INSPECTION	ATC	0.3	\$ 25.06	\$ 0.00	\$ 0.00	\$ 0.00	\$ 25.06	1/2/20; 10:16:00 AM
PM	LSW-3480216	LSW-ELEC-VFD-M-120	Motor Test VFD	QUARTERLY VFD INSPECTION	ATC	0.15	\$ 12.53	\$ 0.00	\$ 0.00	\$ 0.00	\$ 12.53	1/2/20; 10:47:00 AM
PM	LSW-3480217	LSW-ELEC-VFD-M-36	MPPS P1 PMP-31111 VFD	QUARTERLY VFD INSPECTION	atc	0.3	\$ 25.06	\$ 0.00	\$ 0.00	\$ 0.00	\$ 25.06	1/3/20; 1:10:00 PM
PM	LSW-3480218	LSW-ELEC-VFD-M-37	MPPS P2 PMP-31112 VFD	QUARTERLY VFD INSPECTION	ATC	0.3	\$ 25.06	\$ 0.00	\$ 0.00	\$ 0.00	\$ 25.06	1/3/20; 1:14:00 PM
PM	LSW-3480219	LSW-ELEC-VFD-M-38	MPPS P3 PMP-31113 VFD	QUARTERLY VFD INSPECTION	ATC	0.3	\$ 25.06	\$ 0.00	\$ 0.00	\$ 0.00	\$ 25.06	1/3/20; 1:18:00 PM
PM	LSW-3480220	LSW-ELEC-VFD-M-39	MPPS P4 PMP-31114 VFD	QUARTERLY VFD INSPECTION	ATC	0.3	\$ 25.06	\$ 0.00	\$ 0.00	\$ 0.00	\$ 25.06	1/3/20; 1:20:00 PM
PM	LSW-3480221	LSW-ELEC-VFD-M-49	MPPS P4 PMP-31114 VFD	QUARTERLY VFD INSPECTION	ATC	0.3	\$ 25.06	\$ 0.00	\$ 0.00	\$ 0.00	\$ 25.06	1/3/20; 1:25:00 PM
PM	LSW-3480222	LSW-ELEC-VFD-M-50	MPPS P5 PMP-31115 VFD	QUARTERLY VFD INSPECTION	ATC	0.3	\$ 25.06	\$ 0.00	\$ 0.00	\$ 0.00	\$ 25.06	1/3/20; 1:26:00 PM
PM	LSW-3480223	LSW-ELEC-VFD-M-100	OD Blower 1 BLR-21111 VFD	QUARTERLY VFD INSPECTION	ATC	0.15	\$ 12.53	\$ 0.00	\$ 0.00	\$ 0.00	\$ 12.53	1/3/20; 1:27:00 PM

Work Order Type	Work Order #	Asset ID	Asset Name	Reason	Labor Report	Actual Hours	Cost Labor Actual	Cost Part Actual	Cost Contractor Actual	Cost Misc Actual	Cost Total Actual	Comp Date
PM	LSW-3480224	LSW-ELEC-VFD-M-101	OD Blower 2 BLR-21112 VFD	QUARTERLY VFD INSPECTION	ATC	0.15	\$ 12.53	\$ 0.00	\$ 0.00	\$ 0.00	\$ 12.53	1/3/20; 1:28:00 PM
PM	LSW-3480225	LSW-ELEC-VFD-M-102	OD Blower 3 BLR-21113 VFD	QUARTERLY VFD INSPECTION	ATC	0.15	\$ 12.53	\$ 0.00	\$ 0.00	\$ 0.00	\$ 12.53	1/3/20; 1:30:00 PM
PM	LSW-3480226	LSW-ELEC-VFD-M-74	OD Blower 3A BLR-23111 VFD	QUARTERLY VFD INSPECTION	ATC	0.3	\$ 25.06	\$ 0.00	\$ 0.00	\$ 0.00	\$ 25.06	1/10/21; 1:59:00 PM
PM	LSW-3480227	LSW-ELEC-VFD-M-75	OD Blower 3B BLR-21312 VFD	QUARTERLY VFD INSPECTION	ATC	0.3	\$ 25.06	\$ 0.00	\$ 0.00	\$ 0.00	\$ 25.06	1/10/21; 2:00:00 PM
PM	LSW-3480228	LSW-ELEC-VFD-M-76	OD Blower 3C BLR-21313 VFD	QUARTERLY VFD INSPECTION	ATC	0.3	\$ 25.06	\$ 0.00	\$ 0.00	\$ 0.00	\$ 25.06	1/10/21; 2:02:00 PM
PM	LSW-3480229	LSW-ELEC-VFD-M-103	OD Blower 4 BLR-21114 VFD	QUARTERLY VFD INSPECTION	ATC	0.15	\$ 12.53	\$ 0.00	\$ 0.00	\$ 0.00	\$ 12.53	1/3/20; 1:30:00 PM
PM	LSW-3480230	LSW-ELEC-VFD-M-104	OD Blower 5 BLR-21115 VFD	QUARTERLY VFD INSPECTION	ATC	0.15	\$ 12.53	\$ 0.00	\$ 0.00	\$ 0.00	\$ 12.53	1/3/20; 1:31:00 PM
PM	LSW-3480231	LSW-ELEC-VFD-M-94	OD Mixer 1A MXR-21241 VFD	QUARTERLY VFD INSPECTION	ATC	0.3	\$ 25.06	\$ 0.00	\$ 0.00	\$ 0.00	\$ 25.06	1/2/20; 10:46:00 AM
PM	LSW-3480232	LSW-ELEC-VFD-M-95	OD Mixer 1B MXR-21242 VFD	QUARTERLY VFD INSPECTION	ATC	0.15	\$ 12.53	\$ 0.00	\$ 0.00	\$ 0.00	\$ 12.53	1/13/21; 6:32:00
PM	LSW-3480233	LSW-ELEC-VFD-M-96	OD Mixer 1C MXR-21243 VFD	QUARTERLY VFD INSPECTION	ATC	0.15	\$ 12.53	\$ 0.00	\$ 0.00	\$ 0.00	\$ 12.53	1/13/21; 6:33:00
PM	LSW-3480234	LSW-ELEC-VFD-M-93	OD Mixer 1D MXR-21244 VFD	QUARTERLY VFD INSPECTION	ATC	0.15	\$ 12.53	\$ 0.00	\$ 0.00	\$ 0.00	\$ 12.53	1/13/21; 6:34:00
PM	LSW-3480235	LSW-ELEC-VFD-M-97	OD Mixer 2A MXR-21241 VFD	QUARTERLY VFD INSPECTION	ATC	0.3	\$ 25.06	\$ 0.00	\$ 0.00	\$ 0.00	\$ 25.06	1/13/21; 6:35:00
PM	LSW-3480236	LSW-ELEC-VFD-M-98	OD Mixer 2B MXR-21242 VFD	QUARTERLY VFD INSPECTION	ATC	0.3	\$ 25.06	\$ 0.00	\$ 0.00	\$ 0.00	\$ 25.06	1/13/21; 6:35:00
PM	LSW-3480237	LSW-ELEC-VFD-M-99	OD Mixer 2C MXR-21243 VFD	QUARTERLY VFD INSPECTION	ATC	0.3	\$ 25.06	\$ 0.00	\$ 0.00	\$ 0.00	\$ 25.06	1/13/21; 6:42:00
PM	LSW-3480238	LSW-ELEC-VFD-M-77	OD Mixer 3A MXR-21341 VFD	QUARTERLY VFD INSPECTION	ATC	0.3	\$ 25.06	\$ 0.00	\$ 0.00	\$ 0.00	\$ 25.06	1/13/21; 6:43:00
PM	LSW-3480239	LSW-ELEC-VFD-M-70	OD Mixer 3A MXR-21341 VFD	QUARTERLY VFD INSPECTION	ATC	0.3	\$ 25.06	\$ 0.00	\$ 0.00	\$ 0.00	\$ 25.06	1/13/21; 6:44:00
PM	LSW-3480240	LSW-ELEC-VFD-M-71	OD Mixer 3B MXR-21342 VFD	QUARTERLY VFD INSPECTION	ATC	0.3	\$ 25.06	\$ 0.00	\$ 0.00	\$ 0.00	\$ 25.06	1/13/21; 6:45:00
PM	LSW-3480241	LSW-ELEC-VFD-M-78	OD Mixer 3B MXR-21342 VFD	QUARTERLY VFD INSPECTION	ATC	0.3	\$ 25.06	\$ 0.00	\$ 0.00	\$ 0.00	\$ 25.06	1/13/21; 6:47:00
PM	LSW-3480242	LSW-ELEC-VFD-M-79	OD Mixer 3C MXR-21343 VFD	QUARTERLY VFD INSPECTION	ATC	0.3	\$ 25.06	\$ 0.00	\$ 0.00	\$ 0.00	\$ 25.06	1/13/21; 6:48:00
PM	LSW-3480243	LSW-ELEC-VFD-M-80	OD Mixer 3D MXR-21344 VFD	QUARTERLY VFD INSPECTION	ATC	0.3	\$ 25.06	\$ 0.00	\$ 0.00	\$ 0.00	\$ 25.06	1/13/21; 6:49:00
PM	LSW-3480244	LSW-ELEC-VFD-M-89	OD Recycle Pump 1A P-21131 VFD	QUARTERLY VFD INSPECTION	ATC - Fan failed inspection-schedule replacement	0.3	\$ 25.06	\$ 0.00	\$ 0.00	\$ 0.00	\$ 25.06	1/2/20; 10:31:00 AM
PM	LSW-3480245	LSW-ELEC-VFD-M-90	OD Recycle Pump 1B P-21132 VFD	QUARTERLY VFD INSPECTION	ATC	0.3	\$ 25.06	\$ 0.00	\$ 0.00	\$ 0.00	\$ 25.06	1/2/20; 10:33:00 AM
PM	LSW-3480246	LSW-ELEC-VFD-M-91	OD Recycle Pump 2A P-21231 VFD	QUARTERLY VFD INSPECTION	ATC	0.3	\$ 25.06	\$ 0.00	\$ 0.00	\$ 0.00	\$ 25.06	1/2/20; 10:35:00 AM
PM	LSW-3480247	LSW-ELEC-VFD-M-92	OD Recycle Pump 2B P-21232 VFD	QUARTERLY VFD INSPECTION	ATC	0.3	\$ 25.06	\$ 0.00	\$ 0.00	\$ 0.00	\$ 25.06	1/2/20; 10:40:00 AM
PM	LSW-3480248	LSW-ELEC-VFD-M-82	OD Recycle Pump 3A PMP-21331 VFD	QUARTERLY VFD INSPECTION	ATC	0.3	\$ 25.06	\$ 0.00	\$ 0.00	\$ 0.00	\$ 25.06	1/13/21; 6:50:00
PM	LSW-3480249	LSW-ELEC-VFD-M-83	OD Recycle Pump 3B PMP-21332 VFD	QUARTERLY VFD INSPECTION	ATC	0.15	\$ 12.53	\$ 0.00	\$ 0.00	\$ 0.00	\$ 12.53	1/13/21; 6:51:00
PM	LSW-3480250	LSW-ELEC-VFD-M-85	RAS Pump 1A PMP-27111 VFD	QUARTERLY VFD INSPECTION	ATC	0.3	\$ 25.06	\$ 0.00	\$ 0.00	\$ 0.00	\$ 25.06	1/2/20; 10:24:00 AM
PM	LSW-3480251	LSW-ELEC-VFD-M-86	RAS Pump 1B PMP-27112 VFD	QUARTERLY VFD INSPECTION	ATC	0.15	\$ 12.53	\$ 0.00	\$ 0.00	\$ 0.00	\$ 12.53	1/2/20; 10:25:00 AM



Work Order Type	Work Order #	Asset ID	Asset Name	Reason	Labor Report	Actual Hours	Cost Labor Actual	Cost Part Actual	Cost Contractor Actual	Cost Misc Actual	Cost Total Actual	Comp Date
PM	LSW-3480252	LSW-ELEC-VFD-M-84	RAS Pump 1C PMP-27113 VFD	QUARTERLY VFD INSPECTION	One of the two fans failed-scheduling a replacement	0.25	\$ 20.89	\$ 0.00	\$ 0.00	\$ 0.00	\$ 20.89	1/2/20:10:23:00 AM
PM	LSW-3480253	LSW-ELEC-VFD-M-72	RAS Pump 2A PMP-27211 VFD	QUARTERLY VFD INSPECTION	ATC	0.15	\$ 12.53	\$ 0.00	\$ 0.00	\$ 0.00	\$ 12.53	1/13/21:6:53:00
PM	LSW-3480254	LSW-ELEC-VFD-M-73	RAS Pump 2B PMP-27212 VFD	QUARTERLY VFD INSPECTION	ATC	0.15	\$ 12.53	\$ 0.00	\$ 0.00	\$ 0.00	\$ 12.53	1/13/21:6:58:00
PM	LSW-3480255	LSW-ELEC-VFD-M-31	RBBS Pump 1 PMP-48111 VFD	QUARTERLY VFD INSPECTION	ATC	0.3	\$ 25.06	\$ 0.00	\$ 0.00	\$ 0.00	\$ 25.06	1/3/20:1:33:00 PM
PM	LSW-3480256	LSW-ELEC-VFD-M-32	RBBS Pump 2 PMP-48112 VFD	QUARTERLY VFD INSPECTION	ATC	0.3	\$ 25.06	\$ 0.00	\$ 0.00	\$ 0.00	\$ 25.06	1/3/20:1:34:00 PM
PM	LSW-3480257	LSW-ELEC-VFD-M-33	RBBS Pump 3 PMP-48113 VFD	QUARTERLY VFD INSPECTION	ATC	0.3	\$ 25.06	\$ 0.00	\$ 0.00	\$ 0.00	\$ 25.06	1/3/20:1:34:00 PM
PM	LSW-3480258	LSW-ELEC-VFD-M-34	RBBS Pump 4 PMP-48114 VFD	QUARTERLY VFD INSPECTION	ATC	0.3	\$ 25.06	\$ 0.00	\$ 0.00	\$ 0.00	\$ 25.06	1/3/20:1:37:00 PM
PM	LSW-3480259	LSW-ELEC-VFD-M-35	RBBS Pump 5 PMP-48115 VFD	QUARTERLY VFD INSPECTION	ATC	0.3	\$ 25.06	\$ 0.00	\$ 0.00	\$ 0.00	\$ 25.06	1/3/20:1:38:00 PM
PM	LSW-3480260	LSW-ELEC-VFD-M-60	RWPS Pump 1A PMP-39121 VFD	QUARTERLY VFD INSPECTION	ATC	0.3	\$ 25.06	\$ 0.00	\$ 0.00	\$ 0.00	\$ 25.06	1/10/21:10:08:00 AM
PM	LSW-3480261	LSW-ELEC-VFD-M-61	RWPS Pump 1B PMP-39122 VFD	QUARTERLY VFD INSPECTION	ATC	0.3	\$ 25.06	\$ 0.00	\$ 0.00	\$ 0.00	\$ 25.06	1/10/21:10:08:00 AM
PM	LSW-3480262	LSW-ELEC-VFD-M-62	RWPS Pump 1C PMP-39123 VFD	QUARTERLY VFD INSPECTION	ATC	0.3	\$ 25.06	\$ 0.00	\$ 0.00	\$ 0.00	\$ 25.06	1/10/21:10:09:00 AM
PM	LSW-3480263	LSW-ELEC-VFD-M-63	RWPS Pump 1D PMP-39124 VFD	QUARTERLY VFD INSPECTION	ATC	0.3	\$ 25.06	\$ 0.00	\$ 0.00	\$ 0.00	\$ 25.06	1/10/21:10:10:00 AM
PM	LSW-3480264	LSW-ELEC-VFD-M-87	SC Drive 1 DRV-25111 VFD	QUARTERLY VFD INSPECTION	ATC	0.3	\$ 25.06	\$ 0.00	\$ 0.00	\$ 0.00	\$ 25.06	1/2/20:10:42:00 AM
PM	LSW-3480265	LSW-ELEC-VFD-M-88	SC Drive 2 DRV-25211 VFD	QUARTERLY VFD INSPECTION	ATC	0.3	\$ 25.06	\$ 0.00	\$ 0.00	\$ 0.00	\$ 25.06	1/2/20:10:43:00 AM
PM	LSW-3480266	LSW-ELEC-VFD-M-81	SC Drive 3 DRV-25311 VFD	QUARTERLY VFD INSPECTION	ATC	0.15	\$ 12.53	\$ 0.00	\$ 0.00	\$ 0.00	\$ 12.53	1/13/21:6:59:00
PM	LSW-3480267	LSW-ELEC-VFD-M-117	Solids Feed Pump 1A PMP-72111 VFD	QUARTERLY VFD INSPECTION	ATC	0.3	\$ 25.06	\$ 0.00	\$ 0.00	\$ 0.00	\$ 25.06	1/13/21:9:02:00
PM	LSW-3480268	LSW-ELEC-VFD-M-118	Solids Feed Pump 1B PMP-72112 VFD	QUARTERLY VFD INSPECTION	ATC	0.3	\$ 25.06	\$ 0.00	\$ 0.00	\$ 0.00	\$ 25.06	1/13/21:9:17:00
PM	LSW-3480269	LSW-ELEC-VFD-M-119	Solids Feed Pump 1C PMP-72113 VFD	QUARTERLY VFD INSPECTION	ATC	0.15	\$ 12.53	\$ 0.00	\$ 0.00	\$ 0.00	\$ 12.53	1/13/21:9:23:00
PM	LSW-3480270	LSW-ELEC-VFD-M-122	TSB Return Pump PMP-95011 VFD	QUARTERLY VFD INSPECTION	ATC	0.15	\$ 12.53	\$ 0.00	\$ 0.00	\$ 0.00	\$ 12.53	1/3/20:1:38:00 PM
PM	LSW-3480271	LSW-INST-SAMPLER-216	Composite Sampler A	MONTHLY SAMPLER INSPECTION	ATC	0.15	\$ 8.59	\$ 0.00	\$ 0.00	\$ 0.00	\$ 8.59	1/23/21:12:02:00 PM
PM	LSW-3480272	LSW-INST-SAMPLER-217	Composite Sampler C	MONTHLY SAMPLER INSPECTION	ATC	0.15	\$ 8.59	\$ 0.00	\$ 0.00	\$ 0.00	\$ 8.59	1/23/21:12:04:00 PM
PM	LSW-3480273	LSW-INST-SAMPLER-219	Influent Sampler	MONTHLY SAMPLER INSPECTION	ATC	0.15	\$ 8.59	\$ 0.00	\$ 0.00	\$ 0.00	\$ 8.59	1/23/21:12:06:00 PM
PM	LSW-3480277	LSW-MIXER-FIXED-17	Wilco Mixer Serial Number 650218958	QUARTERLY OXIDATION DITCH MIXER INSPECTION	Not pulling OD3 equipment at this time-was pulled a few months ago and ditch has not been brought back online since last service	0.01	\$ 0.57	\$ 0.00	\$ 0.00	\$ 0.00	\$ 0.57	1/6/20:12:10:00 PM

Work Order Type	Work Order #	Asset ID	Asset Name	Reason	Labor Report	Actual Hours	Cost Labor Actual	Cost Part Actual	Cost Contractor Actual	Cost Misc Actual	Cost Total Actual	Comp Date
PM	LSW-3480278	LSW-PUMP-SUB-119	Wilo Recycle Pump Serial Number 650218953	QUARTERLY OXIDATION DITCH MIXER INSPECTION	Not pulling OD3 equipment at this time- was pulled a few months ago and ditch has not been brought back online since last service	0.01	\$ 0.57	\$ 0.00	\$ 0.00	\$ 0.00	\$ 0.57	1/6/20: 12:11:00 PM
PM	LSW-3480280	LSW-MIXER-FIXED-S-16	Oxidation Ditch 3 Anoxic Basin 3A Mixer MXR-21321	QUARTERLY OXIDATION DITCH MIXER INSPECTION	Not pulling OD3 equipment at this time- was pulled a few months ago and ditch has not been brought back online since last service	0.01	\$ 0.57	\$ 0.00	\$ 0.00	\$ 0.00	\$ 0.57	1/6/20: 12:13:00 PM
PM	LSW-3480281	LSW-MIXER-FIXED-S-17	Oxidation Ditch 3 Anoxic Basin 3B Mixer MXR-21322	QUARTERLY OXIDATION DITCH MIXER INSPECTION	Not pulling OD3 equipment at this time- was pulled a few months ago and ditch has not been brought back online since last service	0.01	\$ 0.57	\$ 0.00	\$ 0.00	\$ 0.00	\$ 0.57	1/6/20: 12:14:00 PM
PM	LSW-3480282	LSW-VEHICLES-ATV-24	2018 Polaris GEM Electric Vehicle 3	MONTHLY GEM CAR INSPECTION	ATC	1	\$ 57.27	\$ 0.00	\$ 0.00	\$ 0.00	\$ 57.27	1/10/20: 12:31:00 PM
PM	LSW-3480283	LSW-VEHICLES-ATV-25	2018 Polaris GEM Electric Vehicle 4	MONTHLY GEM CAR INSPECTION	ATC	1	\$ 57.27	\$ 0.00	\$ 0.00	\$ 0.00	\$ 57.27	1/10/20: 12:30:00 PM
PM	LSW-3480284	LSW-VEHICLES-ATV-26	2021 Polaris GEM Electric Vehicle 5	MONTHLY GEM CAR INSPECTION	ATC ATC	1	\$ 57.27	\$ 0.00	\$ 0.00	\$ 0.00	\$ 57.27	1/10/20: 12:25:00 PM
PM	LSW-3480285	LSW-VEHICLES-ATV-27	2021 Polaris GEM Electric Vehicle 6	MONTHLY GEM CAR INSPECTION	ATC	1	\$ 57.27	\$ 0.00	\$ 0.00	\$ 0.00	\$ 57.27	1/10/20: 12:23:00 PM
PM	LSW-3480286	LSW-VEHICLES-ATV-28	2024 Polaris GEM Electric Vehicle 7	MONTHLY GEM CAR INSPECTION	ATC	1	\$ 57.27	\$ 0.00	\$ 0.00	\$ 0.00	\$ 57.27	1/10/20: 12:43:00 PM
PM	LSW-3480287	LSW-PUMP-CTV-376	Filter 1 Sample Pump PMP-35121	MONTHLY SAMPLE PUMP INSPECTION	ATC	0.15	\$ 14.40	\$ 0.00	\$ 0.00	\$ 0.00	\$ 14.40	1/3/20: 9:28:00 PM
PM	LSW-3480288	LSW-PUMP-CTV-377	Filter 2 Sample Pump PMP-35221	MONTHLY SAMPLE PUMP INSPECTION	ATC	0.15	\$ 14.40	\$ 0.00	\$ 0.00	\$ 0.00	\$ 14.40	1/3/20: 9:29:00 PM
PM	LSW-3480289	LSW-PUMP-CTV-378	Filter 3 Sample Pump PMP-35321	MONTHLY SAMPLE PUMP INSPECTION	ATC	0.15	\$ 14.40	\$ 0.00	\$ 0.00	\$ 0.00	\$ 14.40	1/3/20: 9:29:00 PM
PM	LSW-3480290	LSW-PUMP-CTV-379	Filter 4 Sample Pump PMP-35421	MONTHLY SAMPLE PUMP INSPECTION	ATC	0.15	\$ 14.40	\$ 0.00	\$ 0.00	\$ 0.00	\$ 14.40	1/3/20: 9:30:00 PM
PM	LSW-3480291	LSW-PUMP-CTV-380	Filter 5 Sample Pump PMP-35521	MONTHLY SAMPLE PUMP INSPECTION	ATC	0.15	\$ 14.40	\$ 0.00	\$ 0.00	\$ 0.00	\$ 14.40	1/3/20: 9:30:00 PM
PM	LSW-3480292	LSW-PUMP-CTV-381	Filter 6 Sample Pump PMP-356421	MONTHLY SAMPLE PUMP INSPECTION	ATC	0.15	\$ 14.40	\$ 0.00	\$ 0.00	\$ 0.00	\$ 14.40	1/3/20: 9:31:00 PM
PM	LSW-3480293	LSW-INST-SCADA-309	Admin Building SCADA System	SCADA SYSTEM PUMP ROTATION	ATC	0.5	\$ 28.64	\$ 0.00	\$ 0.00	\$ 0.00	\$ 28.64	1/13/20: 2:13:00 PM
PM	LSW-3480294	LSW-GEN-EM-L-4	Standby Generator 1	MONTHLY GENERATOR INSPECTION	Duplicate PM	1	\$ 57.27	\$ 0.00	\$ 0.00	\$ 0.00	\$ 57.27	1/3/20: 9:28:00 PM
PM	LSW-3480295	LSW-GEN-EM-L-4	Standby Generator 1	MONTHLY GENERATOR INSPECTION	ATC	0.5	\$ 48.00	\$ 0.00	\$ 0.00	\$ 0.00	\$ 48.00	1/3/20: 9:27:00 PM

Work Order Type	Work Order #	Asset ID	Asset Name	Reason	Labor Report	Actual Hours	Cost Labor Actual	Cost Part Actual	Cost Contractor Actual	Cost Misc Actual	Cost Total Actual	Comp Date
PM	LSW-3480296	LSW-PT-GEARBOX-768	DAF Unit 1 Drive Assembly DRV-33111	MONTHLY DAF DRIVE INSPECTION	ATC	0.5	\$ 48.00	\$ 0.00	\$ 0.00	\$ 0.00	\$ 48.00	1/7/20; 8:49:00
PM	LSW-3480297	LSW-PT-GEARBOX-769	DAF Unit 2 Drive Assembly DRV-33211	MONTHLY DAF DRIVE INSPECTION	ATC	0.5	\$ 48.00	\$ 0.00	\$ 0.00	\$ 0.00	\$ 48.00	1/7/20; 8:50:00
PM	LSW-3480299	LSW-INST-DO-170	Oxidation Ditch 1 Influent D.O Probe S/N 162190000008	MONTHLY D.O. METER INSPECTION	ATC	0.5	\$ 28.64	\$ 0.00	\$ 0.00	\$ 0.00	\$ 28.64	1/6/20; 2:08:00 PM
PM	LSW-3480300	LSW-INST-DO-165	Oxidation Ditch 1 Effluent D.O Probe S/N 1621800000039	MONTHLY D.O. METER INSPECTION	ATC	1	\$ 57.27	\$ 0.00	\$ 0.00	\$ 0.00	\$ 57.27	1/6/20; 2:09:00 PM
PM	LSW-3480301	LSW-INST-DO-166	Oxidation Ditch 2 Effluent D.O. Probe S/N 1723100000038	MONTHLY D.O. METER INSPECTION	ATC	0.5	\$ 28.64	\$ 0.00	\$ 0.00	\$ 0.00	\$ 28.64	1/6/20; 2:13:00 PM
PM	LSW-3480302	LSW-INST-DO-171	Oxidation Ditch 2 Influent D.O. Probe S/N 1631300000046	MONTHLY D.O. METER INSPECTION	ATC	0.5	\$ 28.64	\$ 0.00	\$ 0.00	\$ 0.00	\$ 28.64	1/6/20; 2:11:00
PM	LSW-3480303	LSW-INST-DO-172	Oxidation Ditch 3 Influent D.O. Probe S/N 1724800000057	MONTHLY D.O. METER INSPECTION	ATC	0.5	\$ 28.64	\$ 0.00	\$ 0.00	\$ 0.00	\$ 28.64	1/6/20; 2:22:00 PM
PM	LSW-3480304	LSW-INST-DO-167	Oxidation Ditch 3 Effluent D.O. Probe S/N 242690027060	MONTHLY D.O. METER INSPECTION	ATC	0.5	\$ 28.64	\$ 0.00	\$ 0.00	\$ 0.00	\$ 28.64	1/6/20; 2:15:00 PM
PM	LSW-3480305	LSW-INST-DO-173	Final Effluent D.O. Probe S/N 1724900000012	MONTHLY D.O. METER INSPECTION	ATC	0.5	\$ 28.64	\$ 0.00	\$ 0.00	\$ 0.00	\$ 28.64	1/7/20; 2:03:00 PM
PM	LSW-3480306	LSW-FILTER-AIR-28	Tertiary Filter Air Dryer	MONTHLY AIR DRYER INSPECTION	ATC	0.25	\$ 24.00	\$ 0.00	\$ 0.00	\$ 0.00	\$ 24.00	1/3/20; 9:15:00
PM	LSW-3480307	LSW-VEHICLES-TRUCK-LT-360	2006 Chevrolet Colorado 4WD Crew Cab with camper shell 171	MONTHLY VEHICLE INSPECTION	ATC	0.25	\$ 14.32	\$ 0.00	\$ 0.00	\$ 0.00	\$ 14.32	1/7/20; 8:56:00
PM	LSW-3480308	LSW-VEHICLES-TRUCK-MDM-40	2018 Ford F550 with IMT crane 875	MONTHLY VEHICLE INSPECTION	ATC	0.25	\$ 14.32	\$ 0.00	\$ 0.00	\$ 0.00	\$ 14.32	1/21/20; 6:53:00
PM	LSW-3480309	LSW-VEHICLES-TRUCK-LT-361	2020 Chevrolet Silverado 1500 871	MONTHLY VEHICLE INSPECTION	ATC	1	\$ 57.27	\$ 0.00	\$ 0.00	\$ 0.00	\$ 57.27	1/10/20; 12:27:00 PM
PM	LSW-3480310	LSW-VEHICLES-TRUCK-LT-362	2022 Chevrolet Colorado WT Crew Cab 4WD 950	MONTHLY VEHICLE INSPECTION	ATC	1	\$ 57.27	\$ 0.00	\$ 0.00	\$ 0.00	\$ 57.27	1/10/20; 12:24:00 PM
PM	LSW-3480311	LSW-VEHICLES-TRUCK-MDM-39	2005 Autocar/Heil Garbage Truck (converted to a yard tractor) #729	MONTHLY VEHICLE INSPECTION	ATC	0.5	\$ 28.64	\$ 0.00	\$ 0.00	\$ 0.00	\$ 28.64	1/7/20; 8:57:00
PM	LSW-3480312	LSW-INST-TURBIDITY-51	Filter 1 Turbidity Meter AE-AIT-35181	MONTHLY TURBIDITY METER INSPECTION	ATC	0.5	\$ 28.64	\$ 0.00	\$ 0.00	\$ 0.00	\$ 28.64	1/27/20; 7:34:00
PM	LSW-3480313	LSW-INST-TURBIDITY-52	Filter 2 Turbidity Meter AE-AIT-35281	MONTHLY TURBIDITY METER INSPECTION	ATC	0.5	\$ 28.64	\$ 0.00	\$ 0.00	\$ 0.00	\$ 28.64	1/27/20; 7:35:00
PM	LSW-3480314	LSW-INST-TURBIDITY-53	Filter 3 Turbidity Meter AE-AIT-35381	MONTHLY TURBIDITY METER INSPECTION	ATC	0.5	\$ 28.64	\$ 0.00	\$ 0.00	\$ 0.00	\$ 28.64	1/27/20; 7:38:00
PM	LSW-3480315	LSW-INST-TURBIDITY-54	Filter 4 Turbidity Meter AE-AIT-35481	MONTHLY TURBIDITY METER INSPECTION	ATC	0.5	\$ 28.64	\$ 0.00	\$ 0.00	\$ 0.00	\$ 28.64	1/27/20; 7:40:00
PM	LSW-3480316	LSW-INST-TURBIDITY-55	Filter 5 Turbidity Meter AE-AIT-35581	MONTHLY TURBIDITY METER INSPECTION	ATC	0.5	\$ 28.64	\$ 0.00	\$ 0.00	\$ 0.00	\$ 28.64	1/27/20; 1:43:00 PM

Work Order Type	Work Order #	Asset ID	Asset Name	Reason	Labor Report	Actual Hours	Cost Labor Actual	Cost Part Actual	Cost Contractor Actual	Cost Misc Actual	Cost Total Actual	Comp Date
PM	LSW-3480317	LSW-INST-TURBIDITY-56	Filter 6 Turbidity Meter AE-AIT-35681	MONTHLY TURBIDITY METER INSPECTION	ATC	0.5	\$ 28.64	\$ 0.00	\$ 0.00	\$ 0.00	\$ 28.64	1/27/21 7:43:00
PM	LSW-3480318	LSW-INST-TURBIDITY-49	Tertiary Filter Turbidity Meter	MONTHLY TURBIDITY METER INSPECTION	Calibration adjustment to match portable meter.	0.5	\$ 28.64	\$ 0.00	\$ 0.00	\$ 0.00	\$ 28.64	1/28/21 12:28:00 PM
PM	LSW-3480319	LSW-INST-PH-91	Filter Feed Pump Wet Well Turbidity Probe Clarifiers S/N 1754772	MONTHLY TURBIDITY METER INSPECTION	ATC: Calibration adjustment to match portable meter.	1	\$ 57.27	\$ 0.00	\$ 0.00	\$ 0.00	\$ 57.27	1/28/21 12:30:00 PM
PM	LSW-3480320	LSW-INST-PH-88	Filter Feed Pump Wet Well Turbidity Probe S/N 1754773	MONTHLY TURBIDITY METER INSPECTION	ATC: Calibration adjustment to match portable meter.	0.5	\$ 28.64	\$ 0.00	\$ 0.00	\$ 0.00	\$ 28.64	1/28/21 12:28:00 PM
PM	LSW-3480321	LSW-INST-TURBIDITY-63	Final Effluent Turbidity Probe S/N 1754776	MONTHLY TURBIDITY METER INSPECTION	ATC	0.5	\$ 28.64	\$ 0.00	\$ 0.00	\$ 0.00	\$ 28.64	1/7/20: 2:08:00 PM
PM	LSW-3480322	LSW-INST-TURBIDITY-65	DAF Unit 1 Inlet (at splitter box) Turbidity Probe S/N 1754789	MONTHLY TURBIDITY METER INSPECTION	ATC	0.5	\$ 28.64	\$ 0.00	\$ 0.00	\$ 0.00	\$ 28.64	1/27/21 8:14:00
PM	LSW-3480323	LSW-INST-TURBIDITY-66	DAF Unit 2 Effluent Turbidity Probe S/N 1754775	MONTHLY TURBIDITY METER INSPECTION	ATC ATC	0.5	\$ 28.64	\$ 0.00	\$ 0.00	\$ 0.00	\$ 28.64	1/27/21 7:31:00
PM	LSW-3480324	LSW-INST-TURBIDITY-64	DAF Unit 2 Inlet (at splitter box) Turbidity Probe S/N 1814998	MONTHLY TURBIDITY METER INSPECTION	ATC	0.5	\$ 28.64	\$ 0.00	\$ 0.00	\$ 0.00	\$ 28.64	1/31/21 1:25:00 PM
PM	LSW-3480325	LSW-INST-TURBIDITY-68	Spare Turbidity Probe S/N 1545147	MONTHLY TURBIDITY METER INSPECTION	Probe is offline and being stored for future use	0.1	\$ 5.73	\$ 0.00	\$ 0.00	\$ 0.00	\$ 5.73	1/7/20: 2:06:00 PM
PM	LSW-3480326	LSW-CLARIFIER-ROUND-L-2	Secondary Clarifier 1	MONTHLY CLARIFIER INSPECTION	ATC ATC	1	\$ 57.27	\$ 0.00	\$ 0.00	\$ 0.00	\$ 57.27	1/16/21 1:03:00 PM
PM	LSW-3480327	LSW-CLARIFIER-ROUND-L-3	Secondary Clarifier 2	MONTHLY CLARIFIER INSPECTION	ATC	0.45	\$ 25.77	\$ 0.00	\$ 0.00	\$ 0.00	\$ 25.77	1/16/21 1:04:00 PM
PM	LSW-3480328	LSW-CLARIFIER-ROUND-L-4	Secondary Clarifier 3	MONTHLY CLARIFIER INSPECTION	ATC	1.15	\$ 65.86	\$ 0.00	\$ 0.00	\$ 0.00	\$ 65.86	1/16/21 1:05:00 PM
PM	LSW-3480329	LSW-BLOWER-PD-S-3	Blower 1A BLR-36011	MONTHLY FILTER BACKWASH BLOWER INSPECTION	ATC	0.5	\$ 48.00	\$ 0.00	\$ 0.00	\$ 0.00	\$ 48.00	1/3/20: 9:24:00
PM	LSW-3480330	LSW-BLOWER-PD-S-2	Blower 1B BLR-36012	MONTHLY FILTER BACKWASH BLOWER INSPECTION	ATC	0.5	\$ 48.00	\$ 0.00	\$ 0.00	\$ 0.00	\$ 48.00	1/3/20: 9:25:00
PM	LSW-3480331	LSW-BLOWER-PD-S-4	Blower 1C BLR-36013	MONTHLY FILTER BACKWASH BLOWER INSPECTION	ATC	0.5	\$ 48.00	\$ 0.00	\$ 0.00	\$ 0.00	\$ 48.00	1/3/20: 9:26:00
PM	LSW-3480332	LSW-VEHICLES-FORKLIFT-26	Caterpillar Forklift Model GP 30k, Type LP	MONTHLY FORK LIFT INSPECTION	ATC, Forklift has small hydraulic leak. Monitoring and getting repair contractor in Ariba to come out to do repairs	1	\$ 95.98	\$ 0.00	\$ 0.00	\$ 0.00	\$ 95.98	1/27/21 1:48:00 PM

Work Order Type	Work Order #	Asset ID	Asset Name	Reason	Labor Report	Actual Hours	Cost Labor Actual	Cost Part Actual	Cost Contractor Actual	Cost Misc Actual	Cost Total Actual	Comp Date
PM	LSW-3480333	LSW-TANK-SILO-9	Lime Silo	MONTHLY LIME SYSTEM INSPECTION	ATC	0.01	\$ 0.57	\$ 0.00	\$ 0.00	\$ 0.00	\$ 0.57	1/27/20: 1:52:00 PM
PM	LSW-3480334	LSW-SCREEN-TRAVELING-2	Headworks Screen 1 SCR-13111	MONTHLY STEP SCREEN INSPECTION	ATC	1	\$ 95.98	\$ 0.00	\$ 0.00	\$ 0.00	\$ 95.98	1/6/20: 11:49:00 AM
PM	LSW-3480335	LSW-SCREEN-TRAVELING-3	Headworks Screen 3 SCR-13311	MONTHLY STEP SCREEN INSPECTION	ATC	1	\$ 95.98	\$ 0.00	\$ 0.00	\$ 0.00	\$ 95.98	1/6/20: 11:50:00 AM
PM	LSW-3480337	LSW-TANK-CHANNEL-15	UV Channel 2	MONTHLY UV CHANNEL INSPECTION	ATC	1	\$ 57.27	\$ 0.00	\$ 0.00	\$ 0.00	\$ 57.27	1/16/20: 12:56:00 PM
PM	LSW-3480338	LSW-TANK-CHANNEL-16	UV Channel 3	MONTHLY UV CHANNEL INSPECTION	ATC ATC	2	\$ 114.54	\$ 0.00	\$ 0.00	\$ 0.00	\$ 114.54	1/16/20: 12:59:00 PM
PM	LSW-3480339	LSW-TANK-CHANNEL-17	UV Channel 4	MONTHLY UV CHANNEL INSPECTION	ATC	2	\$ 114.54	\$ 0.00	\$ 0.00	\$ 0.00	\$ 114.54	1/17/20: 10:38:00 AM
PM	LSW-3480340	LSW-TANK-CHANNEL-18	UV Channel 5	MONTHLY UV CHANNEL INSPECTION	cleaned and inspected	2.5	\$ 143.18	\$ 0.00	\$ 0.00	\$ 0.00	\$ 143.18	1/2/20: 1:27:00 PM
PM	LSW-3480341	LSW-PUMP-ROTARY-VANE-1	UV Area Pressure Washer	MONTHLY UV PRESSURE WASHER INSPECTION	ATC	1	\$ 57.27	\$ 0.00	\$ 0.00	\$ 0.00	\$ 57.27	1/2/20: 1:24:00 PM
PM	LSW-3480342	LSW-GRIT-COMPACTOR-4	Screenings Washer 3 WSH-13322	MONTHLY SCREENINGS WASHER INSPECTION	ATC	0.25	\$ 24.00	\$ 0.00	\$ 0.00	\$ 0.00	\$ 24.00	1/6/20: 11:58:00 AM
PM	LSW-3480343	LSW-VEHICLES FOLDER-4	Kubota Utility Vehicle	MONTHLY KUBOTA INSPECTION	ATC	0.25	\$ 14.32	\$ 0.00	\$ 0.00	\$ 0.00	\$ 14.32	1/9/20: 2:10:00 PM
PM	LSW-3480344	LSW-INST-FLUME-19	Parshall Flume	MONTHLY PARSHALL FLUME INSPECTION	ATC	0.25	\$ 24.00	\$ 0.00	\$ 0.00	\$ 0.00	\$ 24.00	1/27/20: 1:47:00 PM
PM	LSW-3480345	LSW-PUMP-TRASH-23	Basin Drain Pump PMP-21411	MONTHLY BASIN DRAIN PUMP INSPECTION	ATC	0.25	\$ 24.00	\$ 0.00	\$ 0.00	\$ 0.00	\$ 24.00	1/21/20: 6:54:00 PM
PM	LSW-3480346	LSW-WELL-WET-323	Influent Pump Wet Well 1	MONTHLY INFLUENT PUMP STATION WET WELL INSPECTION	ATC	0.5	\$ 28.64	\$ 0.00	\$ 0.00	\$ 0.00	\$ 28.64	1/23/20: 12:00:00 PM
PM	LSW-3480347	LSW-WELL-WET-324	Influent Pump Wet Well 2	MONTHLY INFLUENT PUMP STATION WET WELL INSPECTION	ATC	0.5	\$ 28.64	\$ 0.00	\$ 0.00	\$ 0.00	\$ 28.64	1/23/20: 12:04:00 PM
PM	LSW-3480348	LSW-GRIT-COMPACTOR-1	Screenings Washer 1 WSH-13121	MONTHLY SCREENINGS WASHER COMPACTOR INSPECTION	ATC	0.25	\$ 24.00	\$ 0.00	\$ 0.00	\$ 0.00	\$ 24.00	1/6/20: 11:57:00 AM
PM	LSW-3480349	LSW-PUMP-M-373	ACD Metering Pump PMP-52611	CHEMICAL METERING PUMP MONTHLY INSPECTION	ATC	0.1	\$ 5.73	\$ 0.00	\$ 0.00	\$ 0.00	\$ 5.73	1/16/20: 12:47:00 PM
PM	LSW-3480350	LSW-PUMP-M-374	ACD Metering Pump PMP-52612	CHEMICAL METERING PUMP MONTHLY INSPECTION	ATC	0.1	\$ 5.73	\$ 0.00	\$ 0.00	\$ 0.00	\$ 5.73	1/16/20: 12:50:00 PM
PM	LSW-3480351	LSW-PUMP-M-375	ACD Metering Pump PMP-52613	CHEMICAL METERING PUMP MONTHLY INSPECTION	ATC	0.1	\$ 5.73	\$ 0.00	\$ 0.00	\$ 0.00	\$ 5.73	1/16/20: 12:52:00 PM
PM	LSW-3480352	LSW-PUMP-M-378	PAC Metering Pump PMP-52111	CHEMICAL METERING PUMP MONTHLY INSPECTION	ATC	0.1	\$ 5.73	\$ 0.00	\$ 0.00	\$ 0.00	\$ 5.73	1/16/20: 1:05:00 PM
PM	LSW-3480353	LSW-PUMP-M-379	PAC Metering Pump PMP-52112	CHEMICAL METERING PUMP MONTHLY INSPECTION	ATC	0.1	\$ 5.73	\$ 0.00	\$ 0.00	\$ 0.00	\$ 5.73	1/16/20: 1:06:00 PM
PM	LSW-3480354	LSW-PUMP-M-380	PAC Metering Pump PMP-52113	CHEMICAL METERING PUMP	ATC	0.1	\$ 5.73	\$ 0.00	\$ 0.00	\$ 0.00	\$ 5.73	1/16/20: 1:07:00 PM

Work Order Type	Work Order #	Asset ID	Asset Name	Reason	Labor Report	Actual Hours	Cost Labor Actual	Cost Part Actual	Cost Contractor Actual	Cost Misc Actual	Cost Total Actual	Comp Date
				MONTHLY INSPECTION								PM
PM	LSW-3480355	LSW-PUMP-M-386	SHX Metering Pump PMP-52811	CHEMICAL METERING PUMP MONTHLY INSPECTION	Pump does not exist.	0.1	\$ 5.73	\$ 0.00	\$ 0.00	\$ 0.00	\$ 5.73	1/23/21 12:08:00 PM
PM	LSW-3480356	LSW-PUMP-M-387	SHX Metering Pump PMP-52812	CHEMICAL METERING PUMP MONTHLY INSPECTION	ATC	0.1	\$ 5.73	\$ 0.00	\$ 0.00	\$ 0.00	\$ 5.73	1/16/21 2:58:00 PM
PM	LSW-3480357	LSW-PUMP-M-388	SHX Metering Pump PMP-52813	CHEMICAL METERING PUMP MONTHLY INSPECTION	ATC	0.15	\$ 8.59	\$ 0.00	\$ 0.00	\$ 0.00	\$ 8.59	1/23/21 12:09:00 PM
PM	LSW-3480358	LSW-PUMP-M-392	Emulsion Polymer Feed Pump 1 PMP-75111	CHEMICAL METERING PUMP MONTHLY INSPECTION	ATC	1	\$ 57.27	\$ 0.00	\$ 0.00	\$ 0.00	\$ 57.27	1/24/21 7:49:00 AM
PM	LSW-3480359	LSW-PUMP-M-394	Emulsion Polymer Feed Pump 2 PMP-75112	CHEMICAL METERING PUMP MONTHLY INSPECTION	ATC	0.25	\$ 14.32	\$ 0.00	\$ 0.00	\$ 0.00	\$ 14.32	1/24/21 10:45:00 AM
PM	LSW-3480360	LSW-PUMP-M-395	Emulsion Polymer Feed Pump 3 PMP-75113	CHEMICAL METERING PUMP MONTHLY INSPECTION	ATC	1	\$ 57.27	\$ 0.00	\$ 0.00	\$ 0.00	\$ 57.27	1/24/21 10:46:00 AM
PM	LSW-3480361	LSW-PUMP-M-367	PIR Metering Pump 1 PMP-75131	CHEMICAL METERING PUMP MONTHLY INSPECTION	ATC	1	\$ 57.27	\$ 0.00	\$ 0.00	\$ 0.00	\$ 57.27	1/24/21 10:48:00 AM
PM	LSW-3480362	LSW-PUMP-M-368	PIR Metering Pump 2 PMP-75132	CHEMICAL METERING PUMP MONTHLY INSPECTION	ATC	0.15	\$ 8.59	\$ 0.00	\$ 0.00	\$ 0.00	\$ 8.59	1/24/21 10:49:00 AM
PM	LSW-3480363	LSW-PUMP-M-369	PIR Metering Pump 3 PMP-75133	CHEMICAL METERING PUMP MONTHLY INSPECTION	ATC	1	\$ 57.27	\$ 0.00	\$ 0.00	\$ 0.00	\$ 57.27	1/24/21 10:50:00 AM
PM	LSW-3480364	LSW-PUMP-M-370	Polymer Feed Pump 1 PMP-75121	CHEMICAL METERING PUMP MONTHLY INSPECTION	ATC	1	\$ 57.27	\$ 0.00	\$ 0.00	\$ 0.00	\$ 57.27	1/24/21 10:51:00 AM
PM	LSW-3480365	LSW-PUMP-M-393	Polymer Feed Pump 2 PMP-75122	CHEMICAL METERING PUMP MONTHLY INSPECTION	ATC	1	\$ 57.27	\$ 0.00	\$ 0.00	\$ 0.00	\$ 57.27	1/24/21 10:52:00 AM
PM	LSW-3480366	LSW-PUMP-M-3915	Polymer Feed Pump 3 PMP-75123	CHEMICAL METERING PUMP MONTHLY INSPECTION	ATC	1	\$ 57.27	\$ 0.00	\$ 0.00	\$ 0.00	\$ 57.27	1/23/21 9:40:00 AM
PM	LSW-3480380	LSW-Facility	Lincoln Facility	MONTHLY FIRE EXTINGUISHER CHECKLIST	ATC	1	\$ 57.27	\$ 0.00	\$ 0.00	\$ 0.00	\$ 57.27	1/31/21 7:47:00 AM
PM	LSW-3480381	LSW-Facility	Lincoln Facility	MONTHLY EMERGENCY LIGHT CHECKLIST	ATC	1	\$ 57.27	\$ 0.00	\$ 0.00	\$ 0.00	\$ 57.27	1/29/21 12:55:00 PM
PM	LSW-3480382	LSW-INST-TURBIDITY-60	UV Inlet Hach Turbidity Probe S/N 1183274	MONTHLY UV INLET TURBIDITY METER INSPECTION	ATC	0.5	\$ 28.64	\$ 0.00	\$ 0.00	\$ 0.00	\$ 28.64	1/7/20: 2:13:00 PM
PM	LSW-3480383	LSW-INST-TURBIDITY-59	UV Inlet YSI Turbidity Probe S/N 20031066	MONTHLY TRANSMITTANCE PROBE INSPECTION	ATC	0.5	\$ 28.64	\$ 0.00	\$ 0.00	\$ 0.00	\$ 28.64	1/21/21 1:13:00 PM
PM	LSW-3480384	LSW-INST-TURBIDITY-61	UV Inlet Hach Transmittance Probe S/N 1284157	MONTHLY TRANSMITTANCE PROBE INSPECTION	ATC	0.5	\$ 28.64	\$ 0.00	\$ 0.00	\$ 0.00	\$ 28.64	1/7/20: 2:17:00 PM
PM	LSW-3480385	LSW-INST-TURBIDITY-62	UV Inlet YSI Transmittance Probe S/N 19481139	MONTHLY TRANSMITTANCE PROBE INSPECTION	ATC	0.5	\$ 28.64	\$ 0.00	\$ 0.00	\$ 0.00	\$ 28.64	1/21/21 1:14:00 PM
PM	LSW-3480558	LSW-ELEC-PANEL-CONTROL-2181	Oxidation Ditch 1 Recycle Pump 1B PMP-21332 Control Panel	Oxidation Ditch 1 Recycle Pump 1B PMP-21332 Control Panel (LSW-ELEC-PANEL-	ATC	0.5	\$ 30.70	\$ 0.00	\$ 0.00	\$ 0.00	\$ 30.70	1/2/20: 9:53:00 AM

Work Order Type	Work Order #	Asset ID	Asset Name	Reason	Labor Report	Actual Hours	Cost Labor Actual	Cost Part Actual	Cost Contractor Actual	Cost Misc Actual	Cost Total Actual	Comp Date
				CONTROL-2181)								
				Disable alarm for motor overload or increase timer. Fault is occurring during shutdown. Do this for all recycle pumps in ditch 1 and 2. I'm not sure if we have this issue at ditch #3.								
PM	LSW-3482464	LSW-Facility	Lincoln Facility	WEEKLY EYEWASH CHECKSHEET	ATC	1	\$ 57.27	\$ 0.00	\$ 0.00	\$ 0.00	\$ 57.27	1/8/20:11:11:00 AM
PM	LSW-3482469	LSW-INST-TEMP-IND-88	Lincoln Outfall R-2 Temperature Indication Transmitter	Lincoln Outfall R-2 Temperature Probe Failed. Reading High.	ATC	0.5	\$ 30.70	\$ 0.00	\$ 0.00	\$ 0.00	\$ 30.70	1/6/20:9:57:00
PM	LSW-3482796	LSW-ELEC-MCC-L-17-6	MCC 202A Section WW-6	MCC 202A Section WW-6-Condition Assessment Not Functional Remedy	No issue	1	\$ 83.54	\$ 0.00	\$ 0.00	\$ 0.00	\$ 83.54	1/7/20:11:36:00 AM
PM	LSW-3482797	LSW-ELEC-MCC-L-17-2	MCC 202A Section WW-2	MCC 202A Section WW-2 Condition assessment Fan Non Op	No issue	1	\$ 83.54	\$ 0.00	\$ 0.00	\$ 0.00	\$ 83.54	1/7/20:11:40:00 AM
PM	LSW-3485494	LSW-Facility	Lincoln Facility	WEEKLY EYEWASH CHECKSHEET	ATC	1	\$ 57.27	\$ 0.00	\$ 0.00	\$ 0.00	\$ 57.27	1/15/21:11:09:00 AM
PM	LSW-3485503	LSW-CLARIFIER-ROUND-S-2	DAF Unit 2	DAF Unit 2 VFD (Decel Inhibit Fault)	Disabled Decel fault alarm	1	\$ 61.38	\$ 0.00	\$ 0.00	\$ 0.00	\$ 61.38	1/13/21:8:57:00
PM	LSW-3487910	LSW-Facility	Lincoln Facility	WEEKLY EYEWASH CHECKSHEET	ATC	1	\$ 57.27	\$ 0.00	\$ 0.00	\$ 0.00	\$ 57.27	1/24/21:11:04:00 AM
PM	LSW-3487923	LSW-Facility-Area-1	Area 01 - Headworks and Influent Pump Station	MONTHLY AREA CLEANING	ATC	1	\$ 57.27	\$ 0.00	\$ 0.00	\$ 0.00	\$ 57.27	1/31/21:7:46:00
PM	LSW-3487924	LSW-Facility-Area-2	Area 02 - Chemical / MCC 200 / Generator	MONTHLY AREA CLEANING	ATC	1	\$ 57.27	\$ 0.00	\$ 0.00	\$ 0.00	\$ 57.27	1/31/21:7:49:00
PM	LSW-3487925	LSW-Facility-Area-3	Area 03 - Oxidation Ditch 1, 2, 3	MONTHLY AREA CLEANING	ATC	1	\$ 57.27	\$ 0.00	\$ 0.00	\$ 0.00	\$ 57.27	1/24/21:10:35:00 AM
PM	LSW-3487926	LSW-Facility-Area-4	Area 04 - Filters / Clarifiers	MONTHLY AREA CLEANING	ATC	1	\$ 57.27	\$ 0.00	\$ 0.00	\$ 0.00	\$ 57.27	1/24/21:10:37:00 AM
PM	LSW-3487927	LSW-Facility-Area-5	Area 05 - Solids Holding Tank / Centrifuge / Greenhouses	MONTHLY AREA CLEANING	ATC	1	\$ 57.27	\$ 0.00	\$ 0.00	\$ 0.00	\$ 57.27	1/24/21:10:41:00 AM
PM	LSW-3487928	LSW-Facility-Area-6	Area 06 - DAF / Mat Pond Pump Station	MONTHLY AREA CLEANING	ATC	1	\$ 57.27	\$ 0.00	\$ 0.00	\$ 0.00	\$ 57.27	1/31/21:7:44:00
PM	LSW-3487929	LSW-Facility-Area-7	Area 07 - UV / Plant Water Pump Station	MONTHLY AREA CLEANING	ATC	1	\$ 57.27	\$ 0.00	\$ 0.00	\$ 0.00	\$ 57.27	1/24/21:10:43:00 AM
PM	LSW-3487930	LSW-Facility-Area-8	Area 08 - Admin Building / Effluent Pump Station / Reclaim Pump Station	MONTHLY AREA CLEANING	ATC	1	\$ 57.27	\$ 0.00	\$ 0.00	\$ 0.00	\$ 57.27	1/31/21:7:43:00
PM	LSW-3487931	LSW-Facility-Area-9	Area 09 - Off-site Buildings	MONTHLY AREA CLEANING	ATC	1	\$ 57.27	\$ 0.00	\$ 0.00	\$ 0.00	\$ 57.27	1/31/21:7:41:00
PM	LSW-3488498	LSW-PT-GEARBOX-755	Secondary Clarifier 1 Gear Reducer	MONTHLY CLARIFIER DRIVE INSPECTION	ATC	0.5	\$ 48.00	\$ 0.00	\$ 0.00	\$ 0.00	\$ 48.00	1/27/21:1:46:00 PM
PM	LSW-3488499	LSW-PT-GEARBOX-756	Secondary Clarifier 2 Gear Reducer	MONTHLY CLARIFIER DRIVE INSPECTION	ATC	0.5	\$ 48.00	\$ 0.00	\$ 0.00	\$ 0.00	\$ 48.00	1/27/21:1:51:00 PM

Work Order Type	Work Order #	Asset ID	Asset Name	Reason	Labor Report	Actual Hours	Cost Labor Actual	Cost Part Actual	Cost Contractor Actual	Cost Misc Actual	Cost Total Actual	Comp Date
PM	LSW-3488500	LSW-PT-GEARBOX-757	Secondary Clarifier 3 Gear Reducer	MONTHLY CLARIFIER DRIVE INSPECTION	ATC	0.5	\$ 48.00	\$ 0.00	\$ 0.00	\$ 0.00	\$ 48.00	1/27/21 1:53:00 PM
PM	LSW-3488501	LSW-INST-PH-85	DAF Unit 1 Inlet pH Probe S/N 2208441904	MONTHLY DO & pH PROBE INSPECTION	ATC	0.5	\$ 28.64	\$ 0.00	\$ 0.00	\$ 0.00	\$ 28.64	1/28/21 8:05:00
PM	LSW-3488502	LSW-INST-PH-86	DAF Unit 2 Effluent pH Probe S/N 2208434509	MONTHLY DO & pH PROBE INSPECTION	ATC	0.5	\$ 28.64	\$ 0.00	\$ 0.00	\$ 0.00	\$ 28.64	1/27/21 7:24:00
PM	LSW-3488503	LSW-INST-PH-87	DAF Unit 2 Inlet (at splitter box) pH Probe S/N 190446497	MONTHLY DO & pH PROBE INSPECTION	ATC	0.5	\$ 28.64	\$ 0.00	\$ 0.00	\$ 0.00	\$ 28.64	1/31/21 1:23:00 PM
PM	LSW-3488504	LSW-INST-PH-90	Filter Feed Pump Wet Well pH Probe S/N 2208441906	MONTHLY DO & pH PROBE INSPECTION	ATC: Calibration adjustment to match portable meter.	0.5	\$ 28.64	\$ 0.00	\$ 0.00	\$ 0.00	\$ 28.64	1/28/21 12:25:00 PM
PM	LSW-3488505	LSW-INST-PH-89	Filter Feed Pump Wet Well pH Probe Clarifiers S/N 230834213284	MONTHLY DO & pH PROBE INSPECTION	ATC	0.5	\$ 28.64	\$ 0.00	\$ 0.00	\$ 0.00	\$ 28.64	1/31/21 1:20:00 PM
PM	LSW-3488506	LSW-INST-PH-92	Spare pH Probe S/N 230934214076	MONTHLY DO & pH PROBE INSPECTION	Verified that ph probe is stored in the lab and is boxed.	0.1	\$ 5.73	\$ 0.00	\$ 0.00	\$ 0.00	\$ 5.73	1/27/21 8:19:00
PM	LSW-3488507	LSW-INST-PH-93	Spare pH Probe S/N 2107441842	MONTHLY DO & pH PROBE INSPECTION	Verified the process ph probe is located in the lab.	0.1	\$ 5.73	\$ 0.00	\$ 0.00	\$ 0.00	\$ 5.73	1/27/21 8:25:00
PM	LSW-3490893	LSW-Facility	Lincoln Facility	WEEKLY EYEWASH CHECKSHEET	ATC	1	\$ 57.27	\$ 0.00	\$ 0.00	\$ 0.00	\$ 57.27	1/30/21 1:41:00 PM
<b>PM - 216 Total:</b>						<b>107.6</b>	<b>\$7,282.65</b>	<b>\$0.00</b>	<b>\$0.00</b>	<b>\$0.00</b>	<b>\$7,282.65</b>	
<b>Grand Total (230 Records):</b>						<b>133.1</b>	<b>\$ 9,404.31</b>	<b>\$ 0.00</b>	<b>\$ 0.00</b>	<b>\$ 70.00</b>	<b>\$ 9,474.31</b>	

